



## DISTRICT COUNCIL

Despatched: 24.06.15

### **LEGAL & DEMOCRATIC ADVISORY COMMITTEE**

**02 July 2015 at 7.00 pm**

**Conference Room, Argyle Road, Sevenoaks**

### **AGENDA**

#### **Membership:**

Cllrs. Abraham, Barnes, Bosley, Eyre, Firth, Halford, Mrs. Hunter, Lake, Pearsall, Pett, Raikes and Ms. Tennessee

#### **Apologies for Absence**

#### **Pages**

#### **Contact**

- |  |                 |  |
|--|-----------------|--|
| 1. <b>Appointment of Chairman</b>  |                 |  |
| 2. <b>Appointment of Vice-Chairman</b>                                     |                 |  |
| 3. <b>Declarations of Interest</b><br>Any interests not already registered |                 |  |
| 4. <b>Update from Portfolio Holder</b>                                     |                 |  |
| 5. <b>Referrals from Cabinet or the Audit Committee (if any)</b>           |                 |  |
| 6. <b>Scope of Officer Responsibilities</b><br>Presentation                |                 |  |
| 7. <b>KCC Boundary Review - Response to Consultation</b>                   | (Pages 1 - 70)  | Christine Nuttall<br>Tel: 01732 227245 |
| 8. <b>Equalities Annual Report</b>   | (Pages 71 - 78) | Lee Banks<br>Tel: 01732 227161         |
| 9. <b>Work Plan</b>  | (Pages 79 - 80) |  |

#### **EXEMPT ITEMS**

(At the time of preparing this agenda there were no exempt items. During any such items which may arise the meeting is likely NOT to be open to the public.)

To assist in the speedy and efficient despatch of business, Members wishing to obtain factual information on items included on the Agenda are asked to enquire of the appropriate Contact Officer named on a report prior to the day of the meeting.

Should you require a copy of this agenda or any of the reports listed on it in another format please do not hesitate to contact the Democratic Services Team as set out below.

For any other queries concerning this agenda or the meeting please contact:

**The Democratic Services Team (01732 227241)**

This page is intentionally left blank

## **KENT COUNTY COUNCIL ELECTORAL DIVISION REVIEW**

### **Legal & Democratic Advisory Committee – 2 July 2015**

Report of	Chief Officer Legal and Governance
Status:	For Consideration
Also considered by:	Governance Committee – 13 July 2015 Council – 21 July 2015
Key Decision:	No
<b>Portfolio Holder</b>	Cllr. Anna Firth
<b>Contact Officer(s)</b>	Christine Nuttall x7245

---

#### **Recommendation to Legal & Democratic Advisory Committee :**

That views on the proposed changes to the KCC electoral division arrangements be given to the Portfolio Holder for any Portfolio Response

#### **Recommendation to Governance Committee:**

That the Committee advises full Council of its views on the proposed changes to the KCC electoral division arrangements

#### **Recommendation to Council:**

That a response be made to the Local Government Boundary Commission for England in relation to the proposed changes to the KCC electoral division arrangements in accordance with Members' views.

---

#### **Reason for recommendation: Response to consultation document issued by the Local Government Boundary Commission for England relating to proposed changes to the KCC electoral division arrangements.**

---

#### **Introduction and Background**

- 1 On the 12 May the Local Government Boundary Commission for England (LGBCE) issued a consultation document on its draft proposals for new county council division boundaries for Kent County Council (KCC). The review is being conducted as KCC currently has high levels of electoral inequality where some councillors represent many more or many fewer voters than others.
- 2 Copies of the News Release, consultation document and consultation map are attached at Appendices A, B and C respectively. The consultation map is not easy

## Agenda Item 7

to use for detailed analysis of the proposals but a very good interactive map can be found by following the web-link contained in the News Release:

(<https://consultation.lgbce.org.uk/node/4285>)

- 3 The interactive map can be zoomed and various layers such as current and proposed boundaries can be turned on or off.

### **Consultation Timetable**

- 4 The consultation period ends on 6 July (an eight-week period). Unfortunately this will not allow time for a formal response from this Council without special meetings of Governance Committee and Full Council being called. The Chief Executive has written to the LGBCE setting out this problem and in particular the impact of the consultation period being set so close to the local elections.
- 5 The LGBCE have agreed to an extension to the 22 July (the day after full Council) on the basis that a draft of what will be considered by Council will be sent to them by 6<sup>th</sup> July, and that they are notified on 22 July of any changes agreed at Council. This can be achieved by the Portfolio Holder passing to them any comments agreed at the Legal & Democratic Advisory Committee.

### **Summary of the Review**

- 6 The aims of the review are to:
  - Improve electoral equality by equalising the number of electors each councillor represents
  - Reflect community identity
  - Provide for effective and convenient local government
- 7 The Commission is looking for responses to the following questions:
  - Do the proposed electoral divisions reflect local communities?
  - Can the proposals be improved whilst maintaining electoral equality?
  - Are the names of the proposed divisions right?
- 8 The proposals are to reduce the current number of members of KCC from 84 to 81, a reduction of three. The three District Councils in Kent, each having a reduction of one in the number of KCC members are Canterbury, Thanet and this Council – Sevenoaks. A table setting out the relevant figures for each Kent District is attached at Appendix D.
- 9 It is clear from the document that electoral equality is the overriding requirement and the figures in Appendix D indicate that the reduction for the Sevenoaks District brings it much more into line with the others across Kent.

### **Mechanics of the Review**

- 10 KCC division boundaries are required to align with Parish Ward (and hence with District Council) boundaries. If a proposal includes the splitting of an existing Parish Ward this must be done alongside the creation of new Parish Wards. There are no such proposals in the Sevenoaks District area.

- 11 The proposals are based on estimated number of electors in 2020 – the projections were developed through an analytical model used by KCC’s Business Intelligence Team, taking into account planned developments and demographic predictions. The estimated total of electors across the KCC area in 2020 is 1,157,343. This equates to an average number of electors per councillor of **14,288** for 81 members in total. It is this figure that any division proposal must look to in order to achieve consistent electoral equality.

**Detail for Sevenoaks District**

- 12 Appendices E and F are tables setting out the detail, by Parish, of the current and proposed KCC Divisions respectively. Under the current arrangements both the Sevenoaks Town Council area and the Swanley Town Council area are split between KCC Divisions. The proposals consolidate the whole of Swanley (together with the Parish of Hextable) into one KCC Division, but still split the Sevenoaks Town area into two parts combining each with a number of the more rural areas adjacent to them.
- 13 The proposed split of Sevenoaks includes the Kippington and Northern Wards of the Town Council from the Eastern, St Johns, Town and Wildernesse wards. This essentially splits the town along the main road from the South, from Riverhill to Solefields, and along the line of the railway line out of the tunnel, through the main Sevenoaks station and along the line towards Bat & Ball station then following the A25 to the East.
- 14 The main changes are as follows:
- Swanley Town Christchurch and Swanley Village wards move from the current “Darent Valley” division to the new “Swanley” division
  - Dunton Green, Knockholt and Halstead move from the current “Sevenoaks West” division to the new “Darent Valley” division
  - Otford moves from the current “Sevenoaks East” division to the new “Darent Valley” division
  - The Sevenoaks Town Northern ward moves from the current “Sevenoaks East” division to the new “Sevenoaks West” division
  - Westerham Town moves from the current “Sevenoaks West” division to the new “Sevenoaks Rural” division.
- 15 The proposed division names are as follows:

<b>Current Division</b>	<b>Proposed Division</b>
Darent Valley	Darent Valley
Sevenoaks Central	
Sevenoaks East	Sevenoaks East
Sevenoaks West	Sevenoaks West

## Agenda Item 7

Sevenoaks North East	Sevenoaks North East
Sevenoaks South	Sevenoaks Rural
Swanley	Swanley

### **Key Implications**

#### Financial

None – consultation on proposals for KCC Divisions only

#### Legal Implications and Risk Assessment Statement.

None – consultation on proposals for KCC Divisions only

#### Equality Assessment

The decisions recommended through this paper have a remote or low relevance to the substance of the Equality Act. There is no perceived impact on end users.

### **Conclusions**

Members' views are sought on the proposals, to be sent as a response from the Portfolio Holder, or from the Council

### **Appendices**

Appendix A – LGBCE News Release 12 May 2015

Appendix B – Draft Recommendations on the new electoral arrangements for Kent County Council

Appendix C – Electoral Review of Kent Consultation Map

Appendix D – Kent Districts Analysis

Appendix E – KCC Review – Current Division Analysis

Appendix F – KCC Review – Proposed Division Analysis

### **Background Papers:**

See Appendices to Report.

**Christine Nuttall**

**Chief Officer for Legal and Governance**

## News Release

Embargoed until: 00:01, 12 May 2015

### Kent residents: have your say on new county division boundaries

The independent Local Government Boundary Commission for England is asking people across Kent to comment on its draft proposals for new county council division boundaries.

An eight-week public consultation on the recommendations begins today and will end on 6 July 2015. The consultation is open to anyone who wants to have their say on new county council electoral divisions, division boundaries and division names across Kent.

The Commission's draft recommendations propose that Kent County Council should have 81 county councillors in the future, three fewer than the current arrangements. The recommendations also outline how those councillors should represent 65 single-member divisions and eight two-member divisions across the county.

The full recommendations and detailed interactive maps are available on the Commission's website at [www.consultation.lgbce.org.uk](http://www.consultation.lgbce.org.uk) and [www.lgbce.org.uk](http://www.lgbce.org.uk). Hard copies of the Commission's report and maps will also be available to view at council buildings and libraries.

Max Caller CBE, Chair of the Commission, said: "We are publishing proposals for a new pattern of electoral divisions across Kent and we are keen to hear what local people think of the recommendations.

"Over the next eight weeks, we are asking local people to tell us if they agree with the proposals or if not, how they can be improved.

"Our review aims to deliver electoral equality for local voters. This means that each county councillor represents a similar number of electors so that everyone's vote in county council elections is worth roughly the same regardless of where you live.

"We also want to ensure that our proposals reflect the interests and identities of local communities across Kent and that the pattern of divisions can help the council deliver effective local government to local people.

"We will consider all the submissions we receive whoever they are from and whether your evidence applies to the whole county or just part of it.

The Commission wants to hear as much evidence as possible in order to develop final recommendations for Kent County Council. If you would like to make a submission to the Commission, please write or email us by 6 July 2015:

The Review Officer (Kent)

## Agenda Item 7

LGBCE  
14<sup>th</sup> floor, Millbank Tower  
London  
SW1P 4QP

Email: [reviews@lgbce.org.uk](mailto:reviews@lgbce.org.uk)

Follow us on Twitter [@LGBCE](https://twitter.com/LGBCE)

Have your say directly through the Commission's consultation portal:  
<https://consultation.lgbce.org.uk/node/4285>

Link to the dedicated web page for the Kent electoral review:  
[www.lgbce.org.uk/current-reviews/south-east/kent/kent-county-council](http://www.lgbce.org.uk/current-reviews/south-east/kent/kent-county-council)

For further information contact:  
Press Office: 0330 500 1250 / 1525  
[press@lgbce.org.uk](mailto:press@lgbce.org.uk)

**ends/**

### **Notes to editors:**

1. The Local Government Boundary Commission for England is responsible for reviewing local authority electoral arrangements, defining boundaries for local elections and the number of councillors to be elected, as well as conducting reviews of local government external boundaries and structures.
2. The Commission is carrying out an electoral review of Kent County Council to provide for 'electoral equality'; that means each county councillor representing approximately the same number of electors. The Commission must also have regard to community identity and interests and providing effective and convenient local government.
3. The types of questions the Commission is asking residents at this stage are:
  - a. Do the proposed electoral divisions reflect local communities?
  - b. How do you think the proposals can be improved whilst maintaining electoral equality?
  - c. Are the names of the proposed divisions right?
4. Residents have from 12 May to 6 July 2015 to have their say about where division boundaries for Kent should be drawn. The Commission will consider all submissions and aims to publish its final recommendations in September 2015. Once the Commission agrees its final recommendations it will lay a draft order in both Houses of Parliament. Parliament will then have 40 days in which to consider the recommendations. If both Houses are satisfied with the recommendations, the draft order will be 'made' and the new divisions will come into effect at the county council elections in 2017.



# Draft recommendations on the new electoral arrangements for Kent County Council

Electoral review

May 2015

### **Translations and other formats**

For information on obtaining this publication in another language or in a large-print or Braille version please contact the Local Government Boundary Commission for England:

Tel: 0330 500 1525

Email: [reviews@lgbce.org.uk](mailto:reviews@lgbce.org.uk)

The mapping in this report is reproduced from OS mapping by the Local Government Boundary Commission for England with the permission of the Controller of Her Majesty's Stationery Office, © Crown Copyright. Unauthorised reproduction infringes Crown Copyright and may lead to prosecution or civil proceedings.

Licence Number: GD 100049926 2015

## Contents

Summary	1
1 Introduction	2
2 Analysis and draft recommendations	4
Submissions received	4
Electorate figures	5
Council size	5
Division patterns	6
Detailed divisions	6
Ashford Borough	8
Canterbury City	10
Dartford Borough	14
Dover District	16
Gravesham Borough	18
Maidstone Borough	20
Sevenoaks District	22
Shepway District	25
Swale Borough	28
Thanet District	31
Tonbridge & Malling Borough	33
Tunbridge Wells Borough	35
Conclusions	37
Parish electoral arrangements	37
3 Have your say	40
<b>Appendices</b>	
A Table A1: Draft recommendations for Kent County Council	42
B Submissions received	50
C Glossary and abbreviations	52

## Summary

### Who we are

The Local Government Boundary Commission for England (LGBCE) is an independent body set up by Parliament. We are not part of government or any political party. We are accountable to Parliament through a committee of MPs chaired by the Speaker of the House of Commons.

Our main role is to carry out electoral reviews of local authorities throughout England.

### Electoral review

An electoral review examines and proposes new electoral arrangements for a local authority. A local authority's electoral arrangements decide:

- How many councillors are needed
- How many wards or electoral divisions should there be, where are their boundaries and what should they be called
- How many councillors should represent each ward or division

### Why Kent?

We are conducting an electoral review of Kent County Council as the Council currently has high levels of electoral inequality where some councillors represent many more or many fewer voters than others. This means that the value of each vote in county council elections varies depending on where you live in Kent. Overall, 31% of divisions currently have a variance of greater than 10%; Romney Marsh has a variance of +38%.

### Our proposals for Kent

Kent County Council currently has 84 councillors. Based on the evidence we received during previous phases of the review, we consider that a decrease in council size by three members will ensure the Council can discharge its roles and responsibilities effectively.

### Electoral arrangements

Our draft recommendations propose that Kent County Council's 81 councillors should represent 65 single-member divisions and eight two-member divisions. None of our proposed 73 divisions would have an electoral variance of greater than 10% from the average for Kent by 2020.

**You have until 6 July 2015 to have your say on the recommendations. See page 40 for how to have your say.**

## 1 Introduction

1 This electoral review is being conducted following our decision to review Kent County Council's electoral arrangements to ensure that the number of voters represented by each councillor is approximately the same across the county.

### What is an electoral review?

2 Our three main considerations in conducting an electoral review are set out in legislation<sup>1</sup> and are to:

- Improve electoral equality by equalising the number of electors each councillor represents
- Reflect community identity
- Provide for effective and convenient local government

3 Our task is to strike the best balance between them when making our recommendations. Our powers, as well as the guidance we have provided for electoral reviews and further information on the review process, can be found on our website at [www.lgbce.org.uk](http://www.lgbce.org.uk)

## Consultation

4 We wrote to the Council inviting the submission of proposals on council size. We then held a period of consultation on division patterns for the county. The submissions received during our consultation have informed our draft recommendations.

This review is being conducted as follows:

<b>Stage starts</b>	<b>Description</b>
18 November 2014	Council size decision
9 December 2014	Division pattern consultation
12 May 2015	Draft recommendations consultation
7 July 2015	Analysis of submissions received and formulation of final recommendations
29 September 2015	Publication of final recommendations

### How will the recommendations affect you?

5 The recommendations will determine how many councillors will serve on the Council. They will also decide which division you vote in, which other communities are in that division and, in some instances, which parish council wards you vote in. Your division name may also change, as may the names of parish or town council wards in the area. The names or boundaries of parishes will not change as a result of our recommendations.

<sup>1</sup> Schedule 2 to the Local Democracy, Economic Development and Construction Act 2009.

## What is the Local Government Boundary Commission for England?

6 The Local Government Boundary Commission for England is an independent body set up by Parliament under the Local Democracy, Economic Development and Construction Act 2009.

Members of the Commission are:

Max Caller CBE (Chair)  
Professor Colin Mellors (Deputy Chair)  
Dr Peter Knight CBE DL  
Alison Lowton  
Sir Tony Redmond  
Professor Paul Wiles CB

Chief Executive: Jolyon Jackson CBE

## 2 Analysis and draft recommendations

7 Legislation<sup>2</sup> states that our recommendations are not intended to be based solely on the existing number of electors<sup>3</sup> in an area, but also on estimated changes in the number and distribution of electors likely to take place over a five-year period from the date of our final recommendations. We must also try to recommend strong, clearly identifiable boundaries for the divisions we put forward at the end of the review.

8 In reality, the achievement of absolute electoral fairness is unlikely to be attainable and there must be a degree of flexibility. However, our approach is to keep variances in the number of electors each councillor represents to a minimum.

9 In seeking to achieve electoral fairness, we work out the average number of electors per councillor by dividing the electorate by the number of councillors as shown on the table below.

	<b>2014</b>	<b>2020</b>
Electorate of Kent County	1,092,651	1,157,343
Number of councillors	81	81
Average number of electors per councillor	13,490	14,288

10 Under our draft recommendations, none of our proposed divisions will have an electoral variance of greater than 10% from the average for the county by 2020. We are therefore satisfied that we have achieved good levels of electoral fairness for Kent.

11 Additionally, in circumstances where we propose to divide a parish between district wards or county divisions, we are required to divide it into parish wards so that each parish ward is wholly contained within a single district ward or county division. We cannot make amendments to the external boundaries of parishes as part of an electoral review.

12 These recommendations cannot affect the external boundaries of Kent County Council or result in changes to postcodes. They do not take into account parliamentary constituency boundaries. There is no evidence that the recommendations will have an adverse effect on local taxes, house prices, or car and house insurance premiums and we are not, therefore, able to take into account any representations which are based on these issues.

### Submissions received

13 See Appendix B for details of submissions received. All submissions may be inspected at our offices and can also be viewed on our website at [www.lgbce.org.uk](http://www.lgbce.org.uk)

<sup>2</sup> Schedule 2 to the Local Democracy, Economic Development and Construction Act 2009.

<sup>3</sup> Electors refers to the number of people registered to vote, not the whole adult population.

## Electorate figures

14 As prescribed in the Local Democracy, Economic Development and Construction Act 2009, the Council submitted electorate forecasts for 2020, a period five years on from the scheduled publication of our final recommendations in 2015. These forecasts were broken down to polling district level and projected an increase in the electorate of approximately 5.9% to 2020. The highest proportion of this growth across the county is expected in the borough of Dartford. Dover is also projected to see substantial growth over the next five years.

15 Having considered the information provided by the Council, we are satisfied that the projected figures are the best available at the present time and these figures form the basis of our draft recommendations.

## Council size

16 Kent County Council submitted a proposal to retain the council size of 84. We carefully considered the representation received. We considered that the Council's submission proposing a council of 84 members was not supported by adequate evidence to justify a council size out of range when compared with its nearest statistical neighbour authorities. We considered that a council size of 81 members was appropriate based on the evidence received and that the authority can operate efficiently and effectively and ensure effective representation of local residents under this council size. We therefore invited proposals for division arrangements based on a council size of 81.

17 We received two submissions concerning council size in response to the consultation on division patterns. One did not support a reduction in size and the other supported splitting the council into two councils of 42 members each. We received no other comments. We were not persuaded by the evidence received to change our decision and we have therefore based our draft recommendations on a council size of 81 elected members.

18 A council size of 81 provides the following allocation between the district councils in the county:

- Ashford District – seven councillors
- Canterbury City – eight councillors, a reduction of one
- Dartford Borough – six councillors
- Dover District – seven councillors
- Gravesham Borough – five councillors
- Maidstone Borough – nine councillors
- Sevenoaks District – six councillors, a reduction of one
- Shepway District – six councillors
- Swale Borough – seven councillors
- Thanet District – seven councillors, a reduction of one
- Tonbridge & Malling Borough – seven councillors
- Tunbridge Wells Borough – six councillors



## Division patterns

19 During consultation on division patterns, we received 59 submissions, including a county-wide proposal from Kent County Council. We also received a scheme from the Labour Group on Kent County Council for Dover, Gravesham, Shepway, Swale and Thanet, the areas where they disagreed with the Council's scheme. We received a scheme from Canterbury & Coastal Liberal Democrats for Canterbury and from the UKIP Group for Swale. We received a scheme for Sevenoaks from a local resident and a scheme for Dartford from a local resident. The scheme in Dartford matched that of the Council scheme. The remainder of the submissions provided localised comments for division arrangements in particular districts.

20 Having carefully considered the proposals received, we were of the view that the proposed patterns of divisions in the Council's proposals resulted in good levels of electoral equality in most areas of the county and generally used clearly identifiable boundaries. We have based our proposals for Ashford, Canterbury, Dartford, Maidstone, Sevenoaks, Shepway, Tonbridge & Malling and Tunbridge Wells on these proposals. However, we have made modifications in some areas to minimise electoral variances and ensure more identifiable boundaries.

21 In Dover, Swale and Thanet we have based our recommendations on the Labour Group proposals with some modifications to ensure our recommendations provide a good reflection of our statutory criteria. We also based some of our proposals for Swale on the submission from UKIP. In Gravesham, we were unable to base our recommendations on any of the submitted schemes as they all would result in either poor electoral equality or would not follow clearly identifiable boundaries. Therefore, in Gravesham we have put forward our own division arrangements.

22 Our draft recommendations are for 65 single-member divisions and eight two-member divisions. We consider that our draft recommendations will provide for good electoral equality while reflecting community identities and interests where we have received such evidence during consultation.

23 A summary of our proposed electoral arrangements is set out in Table A1 (on pages 42–9) and on the large map accompanying this report. We welcome all comments on these draft recommendations. We also welcome comments on the division names we have proposed as part of the draft recommendations.

## Detailed divisions

24 The tables on pages 8–36 detail our draft recommendations for each district in Kent. They detail how the proposed division arrangements reflect the three statutory<sup>4</sup> criteria of:

- Equality of representation
- Reflecting community interests and identities
- Providing for convenient and effective local government

---

<sup>4</sup> Local Democracy, Economic Development and Construction Act 2009.



## Ashford District

Division name	Number of Cllrs	Variance 2020	Description	Detail
<b>Ashford Central</b>	1	-2%	This division includes the unparished areas of Bybrook, Barrow Hill and Godinton Park.	This division is identical to the existing division as we consider it continues to provide good electoral equality for the area while reflecting community identities.
<b>Ashford East</b>	1	0%	This division includes the unparished areas of Willesborough and South Willesborough, and part of Sevington parish.	These divisions are almost identical to the existing divisions and we note they continue to offer good electoral equality for the area. We have made a small modification to the boundary between the two divisions to use the River Stour as the northern boundary of Ashford East division. This affects seven electors who are moved from Ashford East to Ashford Rural East division.
<b>Ashford Rural East</b>	1	-6%	This division includes the parishes of Aldington, Bonnington, Brook, Chilham, Crundale, Godmersham, Hastingleigh, Mersham, Molash, Smeeth and Wye with Hinxhill and part of Sevington parish. It also includes the unparished area of Kennington.	
<b>Ashford Rural South</b>	1	-3%	This division includes the parishes of Bilsington, Kingsnorth, Orlestone, Ruckinge, Shadoxhurst, Warehorne and Woodchurch.	This division is based on a proposal received during consultation with a small modification to include the entire parish of Stanhope in Ashford South division. We consider this better reflects the community in this area.

<b>Ashford Rural West</b>	1	-5%	This division includes the parishes of Bethersden, Boughton Aluph, Challock, Charing, Eastwell, Egerton, High Halden, Hothfield, Little Chart, Pluckley and Westwell. It also includes part of the parish of Great Chart with Singleton, and a small part of the unparished area of Goat Lees.	This division is based a proposal received during consultation. However, we propose to move Smarden parish to Tenterden division to allow us to ensure electoral equality in that division.
<b>Ashford South</b>	1	5%	This division includes the unparished area of South Ashford and Ashford town centre as well as the parish of Stanhope and part of the parish of Great Chart with Singleton.	This is based on a proposal received during consultation with a small modification to include the entire parish of Stanhope in this division. We are satisfied that it provides a good reflection of our statutory criteria.
<b>Tenterden</b>	1	-5%	This division includes the parishes of Appledore, Biddenden, Kenardington, Newenden, Rolvenden, Smarden, Stone-cum-Ebony, Tenterden and Wittersham.	We propose to move Smarden parish from Ashford Rural West division to ensure good electoral equality in this division. We received a submission from Biddenden Parish Council that supported Biddenden remaining in Tenterden division. We are persuaded that this will reflect community identities and have retained the parish in this division.

## Canterbury City

Division name	Number of Cllrs	Variance 2020	Description	Detail
<b>Canterbury City North</b>	1	7%	This division is made up of the unparished areas of Canterbury that make up the City Council wards of Northgate and St Stephen's and parts of Westgate and Blean Forest wards.	The reduction of three councillors across Kent means that the number of councillors for Canterbury is reduced from nine to eight. This means that there will be significant change to electoral divisions in Canterbury. We propose a division that covers areas in the north of the city which we consider share a common identity and interests.
<b>Canterbury City South</b>	1	3%	This division is made up of the unparished areas of Canterbury that make up the City Council ward of Barton and parts of the Westgate and Wincheap wards.	This division is based on a proposal received during consultation, with a minor modification to provide a more identifiable boundary. The county-wide submission excluded a part of Martyrs' Field from the division which, whilst partly coterminous with a City Council ward, appeared not to follow identifiable ground detail. Instead we choose to include a small area of housing on the Canterbury city side of the A2 as detailed below. This provides good electoral equality for both Canterbury City divisions.
<b>Canterbury North</b>	1	8%	This division includes the parishes of Chestfield, Hackington, Harbledown & Rough Common and St Cosmus & St Damian in the Blean. It also includes parts of the parish of Chartham and the	This division is based on a proposal received during consultation. The reduction in the number of councillors in Canterbury means that the rural division will be larger than the existing division. This proposed

			unparished area around the University of Kent at Canterbury, and South Street near Whitstable.	division covers parishes to the north and west of Canterbury city, which we consider have a similar character and shared community identities and interests. This division also unites all of the campus of the University of Kent in one division. We consider that this division provides good electoral equality.
<b>Canterbury South</b>	1	-7%	This division includes the parishes of Adisham, Barham, Bekesbourne-with-Patrixbourne, Bishopsbourne, Bridge, Fordwich, Ickham & Well, Kingston, Littlebourne, Lower Hardres, Petham, Thanington Without, Upper Hardres, Waltham, Wickhambreaux, and Womenswold. It also includes part of the parish of Chartham and a small unparished area of South Canterbury.	<p>This division is based on a proposal received during consultation with a small modification. We propose to include the parish of Fordwich in this division. We also propose that the parish of Westbere and village of Hersden in Sturry parish be included in our proposed Herne Village &amp; Sturry division. We noted that the parish of Westbere and village of Hersden have no transport links to their south with the main railway line out of Canterbury separating them from parishes to the south.</p> <p>This division includes all of the rural parishes to the south and west of Canterbury city that have many shared interests and community ties. The proposed division also provides good electoral equality for the area. This proposal is supported by Bekesbourne-with-Patrixbourne and Littlebourne parish councils.</p>

<b>Herne Bay East</b>	1	2%	This division is made up of the majority of eastern and central Herne Bay and Beltinge.	Herne Bay has too large an electorate for a single-member division. We therefore propose that this division includes the centre of Herne Bay and surrounding area which we consider best reflects the community identities in this part of Canterbury district.
<b>Herne Village &amp; Sturry</b>	1	8%	This division includes the parishes of Chislet, Herne & Broomfield, Hoath, Westbere and Sturry. It also includes the unparished areas of Hillborough, Bishopstone and Reculver.	This division is based on a proposal received during consultation with the modifications mentioned above, and a change of name. We propose a division that includes the parishes in the north and east of Canterbury which we consider are of a similar character and identity. This division provides for good electoral equality. We propose to name this division Herne Village & Sturry. Our proposed division is in line with a submission from Herne & Broomfield Parish Council.
<b>Whitstable East &amp; Herne Bay West</b>	1	1%	This division includes the unparished areas of Tankerton, Swalecliffe and Greenhill.	We propose that part of Whitstable and part of Herne Bay be included in a division due to the fact that Whitstable and Herne Bay each have an electorate that is too large for single-member divisions covering these areas. Given these constraints, we consider our proposed division reflects community identities and interests in this area and uses clearly identifiable boundaries.

<b>Whitstable West</b>	1	6%	This division includes the unparished areas of central Whitstable and Seasalter.	This division is based on a proposal received during consultation. Like Herne Bay, Whitstable contains too many electors for a single-member division. We propose that the centre of Whitstable and Seasalter form a division that, based on the evidence received, continues to reflect community identity. We propose to name this division Whitstable West.
------------------------	---	----	--	--



## Dartford Borough

Division name	Number of Cllrs	Variance 2020	Description	Detail
<b>Dartford East</b>	1	-2%	This division includes the unparished areas of Hesketh and the Fleet Estate as well as parts of the parishes of Stone and Darenth.	This division is based on a proposal received during consultation. It includes the area of Castle from Stone parish which is currently included in the Swanscombe & Greenhithe division. This improves the electoral equality in both divisions.
<b>Dartford North East</b>	1	3%	This division includes the unparished areas of Temple Hill and New Town, and the Milestone area of Stone parish.	These divisions are identical to the existing divisions and we believe they continue to offer good electoral equality for the area while reflecting community identities.
<b>Dartford Rural</b>	1	-4%	This division includes the parishes of Bean, Longfield & New Barn, Southfleet and Sutton-at-Hone & Hawley. It also includes part of the parish of Darenth.	
<b>Dartford West</b>	1	-2%	This division includes the unparished areas of Dartford Town Centre and Bowmans.	
<b>Swanscombe &amp; Greenhithe</b>	1	7%	This division includes the parish of Swanscombe & Greenhithe.	

				<p>electorate is projected to grow by 52% by 2020. Two submissions suggested that the division required an extra councillor or that the review should be halted due to the proposed development of Ebbsfleet Garden City.</p> <p>We asked the Council to provide us with projected electorates and we are satisfied that the projected figures of 52% growth are the best available at the present time. These figures therefore have formed the basis of our draft recommendations.</p>
<b>Wilmington</b>	1	-3%	This division includes the parish of Wilmington as well as the unparished areas of Brooklands, Maypole and Joydens Wood.	This division is identical to the existing division and we believe it continues to offer good reflection of our statutory criteria.

**Dover District**

<b>Division name</b>	<b>Number of Cllrs</b>	<b>Variance 2020</b>	<b>Description</b>	<b>Detail</b>
<b>Deal Town</b>	2	-8%	This division includes the parishes of Deal, Sholden and Walmer.	We propose adding the parish of Sholden to the existing Deal Town division as we consider that this is where community ties lie in this area. We were not persuaded by the proposal to place this area into two single-member divisions as proposed by the county-wide submission. We consider this proposal would result in a division of a cohesive community and that a single two-member division provides the best balance between our statutory criteria. Sholden Parish Council supported its inclusion in the proposed division.
<b>Dover North</b>	1	-3%	This division includes the parishes of Aylesham, Great Mongeham, Guston, Langdon, Nonington, Northbourne, Ringwould with Kingsdown, Ripple, St Margaret's at Cliffe, Sutton and Tilmanstone.	This division is identical to the existing division and we believe it continues to offer good electoral equality for the area.
<b>Dover Town</b>	2	-7%	This division includes the parishes of Dover and River.	This division is based on a proposal received during consultation. We have made a slight modification to both divisions. The proposed division of Dover Town had a variance of -11%. We consider this variance to be too high and we propose to include the parish of River in our Dover Town
<b>Dover West</b>	1	-9%	This division includes the parishes of Alkham, Capel-le-Ferne, Denton with Wootton, Eythorne, Hougham Without,	

			Lydden, Shepherdswell with Coldred, Temple Ewell and Whitfield.	division. We consider this is appropriate given the transport and community links in the area. Furthermore, this improves the electoral equality for both divisions.
<b>Sandwich</b>	1	2%	This division includes the parishes of Ash, Eastry, Goodnestone, Preston, Sandwich, Staple, Stourmouth, Wingham, Woodnesborough and Worth.	This division is identical to the existing division and we consider it continues to offer good electoral equality for the area while reflecting community identities.

## Gravesham Borough

Division name	Number of Cllrs	Variance 2020	Description	Detail
<b>Gravesend Central</b>	2	6%	This division includes the central and southern part of Gravesend.	We were not persuaded that the proposals submitted for Gravesham sufficiently met our three statutory criteria of equality of representation, reflecting community interests and identities and providing for convenient and effective local government. We have therefore developed our own proposals for this area. We propose a two-member division for central Gravesend that we consider reflects the communities in the area and minimises electoral variances.
<b>Gravesend North</b>	1	6%	This division includes the north and eastern part of Gravesend, the parish of Higham and part of the parish of Shorne.	We propose a division which includes the north and east parts of Gravesend and the villages to the east of the town. We consider that this is reflective of communities in the area, as these villages have good communication and transport links to Gravesend. To ensure good electoral equality for this division and the division of Gravesham Rural it is necessary to divide the parish of Shorne between these divisions. We therefore propose to include those properties north of the A226 Gravesend Road in this division. This improves the electoral equality in both this and the adjoining Gravesham Rural division.

<b>Gravesham Rural</b>	1	8%	This division includes the parishes of Cobham, Luddesdown, Meopham and Vigo, part of the parish of Shorne and the unparished areas of Istead Rise and a small part of Gravesend.	We propose a division that includes all of the parishes to the south of the A2 and part of the parish of Shorne that lies to the north of the A2. None of the submissions we received for this division provided good electoral equality, nor did they propose sufficiently identifiable boundaries for the area. We consider that our proposed division provides the best balance of our three statutory criteria.
<b>Northfleet</b>	1	7%	This division includes the unparished areas of Northfleet and the western part of Gravesend.	We propose a division that contains all of Northfleet and a small part of west Gravesend which we consider reflects the communities in this area.

## Maidstone Borough

Division name	Number of Cllrs	Variance 2020	Description	Detail
<b>Maidstone Central</b>	2	-1%	This division includes the centre of Maidstone including the areas of Allington, Barming Heath, Cherry Orchard and Upper Fant.	These divisions are almost identical to the existing divisions and we believe they continue to offer good electoral equality for the area. We have made one small modification by moving an area of the town centre from Maidstone North East division to Maidstone Central. This proposal is based on the county-wide submission.
<b>Maidstone North East</b>	1	-2%	This division includes the unparished areas of Boxley Road, Penenden Heath, Ringlestone and Vinters Park. It also includes a small part of the parish of Boxley.	
<b>Maidstone Rural East</b>	1	1%	This division includes the parishes of Bicknor, Boughton Malherbe, Broomfield & Kingswood, Detling, East Sutton, Frinsted, Harrietsham, Headcorn, Hollingbourne, Hucking, Lenham, Otterden, Stockbury, Thurnham, Ulcombe, Wichling and Wormshill.	These divisions are identical to the existing divisions and we believe they continue to offer good electoral equality for the area while reflecting community identities.
<b>Maidstone Rural North</b>	1	6%	This division includes the parishes of Bearsted and Bredhurst, the vast majority of the parish of Boxley and a small unparished area of Maidstone.	
<b>Maidstone Rural South</b>	1	-8%	This division includes the parishes of Chart Sutton, Collier Street, Langley, Marden, Staplehurst and Sutton	This division is based on a proposal received during consultation. The parishes of Collier Street and Marden are transferred

			Valence and part of the parish of Boughton Monchelsea.	to this division from Maidstone Rural West in exchange for the parishes of Loose. This ensures that electoral variances are kept to a minimum in both divisions.
<b>Maidstone Rural West</b>	1	-6%	This division includes the parishes of Barming, Coxheath, East Farleigh, Hunton, Linton, Loose, Nettlestead, Teston, West Farleigh and Yalding.	This division is based on a proposal received during consultation. The parish of Loose is transferred to this division from Maidstone Rural South in exchange for the parishes of Collier Street and Marden. This improves the electoral equality in both divisions.
<b>Maidstone South</b>	1	3%	This division includes the unparished areas of North Loose and Shepway North and the parish of Tovil.	These divisions are identical to the existing divisions and we believe they continue to offer good electoral equality for the area.
<b>Maidstone South East</b>	1	-4%	This division includes the unparished areas of Shepway South and Parkwood, the parishes of Downswood, Leeds and Otham and part of the parish of Boughton Monchelsea.	



**Sevenoaks District**

<b>Division name</b>	<b>Number of Cllrs</b>	<b>Variance 2020</b>	<b>Description</b>	<b>Detail</b>
<b>Darent Valley</b>	1	3%	This division includes the parishes of Crockenhill, Dunton Green, Eynsford, Farningham, Halstead, Horton Kirby & South Darenth, Knockholt, Otford and Shoreham.	<p>The reduction of three councillors across Kent means that the number of councillors for Sevenoaks is reduced from seven to six. This reduction was not supported by Edenbridge Town Council in a submission received. However, in order to ensure good electoral equality, it is necessary to provide this allocation of councillors to Sevenoaks.</p> <p>This division is based on a proposal received during consultation with a slight amendment to include all of Swanley parish in a Swanley division. We consider that these parishes share good communication and transport links as well as reflecting community identity along the Darent Valley. This proposal was supported by Crockenhill Parish Council.</p>
<b>Sevenoaks East</b>	1	-1%	This division includes the parishes of Kemsing, Seal, Sevenoaks Weald and the eastern part of Sevenoaks parish.	We consider that the parishes to the east of Sevenoaks share good communication links with central Sevenoaks and each other. We also consider that the A25, main railway line and A225 provide a clearly identifiable boundary between east and west Sevenoaks.

<b>Sevenoaks North East</b>	1	-1%	This division includes the parishes of Ash-cum-Ridley, Fawkham, Hartley and West Kingsdown.	We consider that this division best represents the community ties in this area, with West Kingsdown having clear transport links with the parishes of Ash-cum-Ridley Fawkham and Hartley on the other side of the M20.
<b>Sevenoaks Rural</b>	1	7%	This division includes the parishes of Chiddingstone, Cowden, Edenbridge, Hever, Leigh, Penshurst and Westerham.	This division is based on a proposal received during consultation and consists of the rural parishes to the south and west that make up the existing Sevenoaks Rural division. We propose adding the parish of Westerham to the existing division to provide for better electoral equality for the area.
<b>Sevenoaks West</b>	1	-3%	This division includes the parishes of Brasted, Chevening, Riverhead and Sundridge with Ide Hill and the western part of the parish of Sevenoaks.	This division is based on a proposal received during consultation. These parishes run north–south to the west of Sevenoaks and we consider that they form a coherent rural community in this part of Sevenoaks. As mentioned above we consider that the A25, main railway line and A225 provide a clearly identifiable boundary between east and west Sevenoaks.
<b>Swanley</b>	1	10%	This division includes the parishes of Hextable and Swanley.	This division is based on a proposal received during consultation with a slight amendment to include all of Swanley parish in a Swanley division. We consider that although this division has a relatively high electoral variance it best reflects community

				identities in this area. This proposal is supported by Hextable Parish Council.
--	--	--	--	---

Shepway District

Division name	Number of Cllrs	Variance 2020	Description	Detail
Cheriton, Sandgate & Hythe East	1	4%	This division includes the unparished area of Cheriton, the parishes of Saltwood and Sandgate and the eastern part of the parish of Hythe.	<p>This division is based on a proposal received during consultation. The high levels of electoral inequality in Romney Marsh require that the existing division is divided between two new divisions. The geography of the area necessitates that the new Romney Marsh division must include part of Hythe. Hythe parish must therefore be divided between two divisions, with part of the parish included in a division with surrounding areas.</p> <p>We visited the area and we consider that the eastern part of Hythe parish should form a division with Sandgate, Saltwood and Cheriton in the unparished area of Folkestone. We consider that these areas share many characteristics, community ties and transport links. Hythe Town Council requested that Hythe division and parish boundaries be coterminous but as stated above we are unable to recommend this given the need to provide a balance between our three statutory criteria.</p>

<b>Elham Valley</b>	1	2%	This division includes the parishes of Acrise, Elham, Elmsted, Hawkinge, Lyminge, Monks Horton, Newington, Paddlesworth, Postling, Sellindge, Stanford, Stelling Minnis, Stowting and Swingfield.	This division is based on a proposal received during consultation. The parishes of Lympne and Saltwood are transferred to the divisions of Hythe West and Cheriton, Sandgate & Hythe East respectively. Upon visiting the area we saw evidence that Lympne and Saltwood had community ties with the town of Hythe and the proposed division improves electoral equality in all three divisions.
<b>Folkestone East</b>	1	-6%	This division includes the unparished areas of East Folkestone around the Canterbury and Dover Roads and East Cliff.	This division is based on a proposal received during consultation. This division and the neighbouring division of Folkestone West reverse the current north–south split of Folkestone in favour of an east–west split. We consider that this division uses easily identifiable boundaries and provides for good electoral equality for the area.
<b>Folkestone West</b>	1	-3%	This division includes the unparished areas of West Folkestone and Morehall.	This division is based on a proposal received during consultation. This division and the neighbouring division of Folkestone East reverse the current north–south split of Folkestone in favour of an east–west split. We consider that this division uses easily identifiable boundaries and provides for good electoral equality for the area.

<b>Hythe West</b>	1	1%	This division includes the western part of Hythe parish and the parishes of Burmarsh, Dymchurch, Lympne, Newchurch and part of the parish of St Mary in the Marsh.	This division is based on a proposal received during consultation. The western part of Hythe parish is paired with Dymchurch and other parishes to the west with which it has good transport links and community ties.
<b>Romney Marsh</b>	1	2%	This division includes the parishes of Brenzett, Brookland, Ivychurch, Lydd, New Romney, Old Romney and Snargate and part of the parish of St Mary in the Marsh.	<p>This division is based on a proposal received during consultation. The current Romney Marsh division has a variance of 38%. This is an unacceptably high variance and to reduce this it is necessary to move the parishes of Burmarsh, Dymchurch, Newchurch and part of St Mary in the Marsh to the Hythe West division. One submission received suggested that the projected electorate figures for Hythe and Romney Marsh were too low.</p> <p>We accept that electoral forecasting is an inexact science but having considered the information provided by the Council, we are satisfied that the projected figures are the best available at the present time.</p>

Swale Borough

Division name	Number of Cllrs	Variance 2020	Description	Detail
Mid Swale	1	1%	This division includes the parishes Bapchild, Bredgar, Luddenham, Lynsted with Kingsdown, Milstead, Norton, Buckland & Stone, Oare, Rodmersham, Teynham and Tonge. It also includes parts of the parishes of Faversham and Tunstall.	<p>This division is based on a proposal received during consultation with a major modification to provide for more identifiable boundaries. It should be noted that the Commission is not normally minded to recommend a ‘doughnut’ division – that is one that is entirely surrounded by another division. We are not persuaded that it reflects community identities or will ensure effective and convenient local government for those electors in the surrounding division. It is therefore necessary to divide the town of Faversham between divisions.</p> <p>Our proposed Mid Swale division includes the Swale Borough Council wards of Priory and St Ann’s and part of Watling ward, along with the rural parishes between Faversham and Sittingbourne either side of the A2. We consider this is reflective of the communities in the area and provides good electoral equality. Faversham Town Council and Teynham Parish Council do not support a proposal that divides Faversham between divisions but as mentioned above we are not persuaded we have received sufficient evidence to accommodate this proposal.</p>

<b>Sheppey</b>	2	6%	This division includes the parishes of Eastchurch, Leysdown, Minster-on-Sea, Queenborough and Warden and the unparished area of Sheerness.	We propose a division that is an amalgamation of the existing two single-member divisions of Sheerness and Sheppey East. Our two-member division has a variance of 6% which improves electoral equality for the Isle of Sheppey.
<b>Sittingbourne North</b>	1	1%	This division includes the unparished area of Sittingbourne to the north of the A2.	This division is based on a proposal received during consultation. Having visited the area, we propose to include the area of Murston in a division with other areas of north Sittingbourne as we considered that to keep those in separate divisions would not represent effective and convenient local government or reflect community ties. We also recognise that, with the opening of Swale Way since the last review of Kent, Murston has good communication and transport links with the rest of North Sittingbourne.
<b>Sittingbourne South</b>	1	-2%	This division includes all of Sittingbourne south of the A2 and a part of the parish of Tunstall.	This division is based on a proposal received during consultation. We have included part of the parish of Tunstall in our Sittingbourne South division to ensure that our division uses the same boundary as the borough ward, which we consider is clearly identifiable.
<b>Swale East</b>	1	-6%	This division includes the parishes of Badlesmere, Boughton under Blean, Dunkirk, Doddington, Eastling,	This division is based on a proposal received during consultation with a major modification to Faversham as mentioned



			Graveney with Goodnestone, Hernhill, Leaveland, Newnham, Ospringe, Selling, Sheldwich and Stalisfield and part of the parish of Faversham.	above. We propose that the borough ward of Abbey and part of Watling ward are included in a division with the parishes to the south and east of Faversham. We consider this is reflective of the communities in the area and provides good electoral equality.
<b>Swale West</b>	1	9%	This division includes the parishes of Bobbing, Borden, Hartlip, Iwade, Lower Halstow, Newington and Upchurch and the unparished areas of Grove Park and The Meads.	This division is based on a proposal received during consultation. We propose that the parishes to the west of Sittingbourne are included in a division with the unparished areas of The Meads and Grove Park on the outskirts of Sittingbourne. We consider this is reflective of the communities in the area and provides for good electoral equality. This proposal was supported by Iwade Parish Council.

Thanet District

Division name	Number of Cllrs	Variance 2020	Description	Detail
<b>Birchington &amp; Rural</b>	2	3%	This division includes the parish of Acol, Birchington, Cliffsend, Manston, Minster, Monkton, Sarre and St Nicholas at Wade. It also includes the unparished areas of Garlinge, Westbrook and Westgate-on-Sea.	<p>We propose a two-member division that amalgamates the two divisions suggested during consultation. The reduction of three councillors across Kent means that the number of councillors for Thanet is reduced from eight to seven. As a result, the divisions in Thanet need to be substantially redrawn.</p> <p>Our proposed division includes the parish of Birchington and surrounding rural parishes with an unparished area to the west of Margate containing Garlinge, Westbrook and Westgate-on-Sea. We also include the parish of Cliffsend in this division. When visiting the area we noted that this area has good communication links throughout the proposed division.</p>
<b>Broadstairs</b>	1	4%	This division includes part of the parish of Broadstairs and St Peter's.	We propose a single-member division to replace the current two-member division of Broadstairs & Sir Moses Montefiore. Our proposed division does not include the East Cliff part of Ramsgate parish which is included in Ramsgate division. We have also included North Foreland in a division with Cliftonville which allows us to provide good electoral equality for the area.

<b>Cliftonville</b>	1	-4%	This division includes the unparished area of Cliftonville and part of the parish of Broadstairs and St Peter's.	Margate and Cliftonville currently make up a two-member division that has poor electoral equality with a variance of -20%. We propose two single-member divisions in this area, one for Margate and one for Cliftonville which we consider best reflects the community ties in the area and provides for much improved electoral equality.
<b>Margate</b>	1	0%	This division includes the unparished areas of Central and South Margate.	
<b>Ramsgate</b>	2	2%	This division includes the parish of Ramsgate.	

## Tonbridge & Malling Borough

Division name	Number of Cllrs	Variance 2020	Description	Detail
<b>Malling Central</b>	1	3%	This division includes the parishes of West Malling and East Malling & Larkfield and part of the parish of Ditton.	The current division splits the parish of East Malling & Larkfield as a result of a development that has occurred since the last review of Kent County Council. We propose to include part of the parish of Ditton in this division. The county-wide submission was circulated to parish councils prior to its submission to the Commission and West Malling and East Malling & Larkfield parish councils and the county councillor for Malling Central support the division of Ditton parish. Whilst this area had acceptable electoral equality our proposed change improves it.
<b>Malling North</b>	1	0%	This division includes the parishes of Addington, Birling, Leybourne, Offham, Ryarsh, Snodland and Trottiscliffe.	This division is almost identical to the existing division and we consider that it continues to provide good electoral equality for the area. We have made a small modification by moving the parish of Stansted to our proposed Malling West division. This provides for a more identifiable boundary in the area and also improves electoral equality.
<b>Malling North East</b>	1	-3%	This division includes the parishes of Aylesford, Burham, Wouldham and part of the parish of Ditton.	As mentioned above, we have transferred part of the parish of Ditton from this division

				to Malling Central to provide for better electoral equality in both divisions.
<b>Malling Rural East</b>	1	2%	This division includes East Peckham, Hadlow, Kings Hill, Mereworth, Wateringbury and West Peckham.	This division is identical to the existing division and we believe it continues to offer the best balance between our statutory criteria.
<b>Malling West</b>	1	-6%	This division includes the parishes of Borough Green, Hildenborough, Ightham, Platt, Plaxtol, Shipbourne, Stansted and Wrotham.	This division is almost identical to the existing division and we believe it continues to offer good electoral equality for the area. We made a small modification by moving the parish of Stansted to this proposed division. This provides for a more identifiable boundary in the area, improves electoral equality and ensures the proposed division continues to reflect community identities.
<b>Tonbridge</b>	2	-4%	This division includes the unparished area of Tonbridge.	This division is identical to the existing division and we believe it continues to provide good electoral equality for the area while reflecting local communities.

## Tunbridge Wells Borough

Division name	Number of Cllrs	Variance 2020	Description	Detail
<b>Cranbrook</b>	1	-3%	This division includes the parishes of Benenden, Cranbrook & Sissinghurst, Frittenden, Goudhurst, Hawkhurst and Sandhurst.	This division is based on a proposal received during consultation. The current electoral division of Cranbrook has poor electoral equality. To remedy this, we propose to transfer the parish of Goudhurst from the division of Tunbridge Wells Rural. Goudhurst has good transport links to the rest of the division and moving it into Cranbrook division provides good electoral equality for both divisions.
<b>Tunbridge Wells East</b>	1	-8%	This division includes the unparished area of Sherwood and the parish of Pembury.	These divisions are identical to the existing divisions and we believe they continue to offer good electoral equality for the area.
<b>Tunbridge Wells North</b>	1	-6%	This division includes the unparished area of St John's and the parish of Southborough.	
<b>Tunbridge Wells Rural</b>	1	-8%	This division includes the parishes of Brenchley, Capel, Horsmonden, Lamberhurst and Paddock Wood.	This division is based on a proposal received during consultation. We propose to transfer the parish of Goudhurst from this division to Cranbrook. Goudhurst has good transport links to the rest of the division and moving it into Cranbrook provides good electoral equality. Lamberhurst Parish Council supported a proposal where it remains in its existing division.

<b>Tunbridge Wells South</b>	1	2%	This division includes the unparished area of Tunbridge Wells South.	These divisions are identical to the existing divisions and we consider they continue to offer good electoral equality for the area while reflecting community identities. Tunbridge Wells Borough Council supported the current divisions being unchanged.
<b>Tunbridge Wells West</b>	1	-1%	This division includes the unparished area of Mount Ephraim and west Tunbridge Wells. It also includes the parishes of Bidborough, Rusthall and Speldhurst.	

## Conclusions

25 Table 1 shows the impact of our draft recommendations on electoral equality, based on 2014 and 2020 electorate figures.

**Table 1: Summary of electoral arrangements**

	Draft recommendations	
	2014	2020
Number of councillors	81	81
Number of electoral divisions	73	73
Average number of electors per councillor	13,490	14,288
Number of divisions with a variance more than 10% from the average	9	0
Number of divisions with a variance more than 20% from the average	1	0

### **Draft recommendation**

Kent County Council should comprise 81 councillors serving 65 single-member divisions and eight two-member divisions. The details and names are shown in Table A1 and illustrated on the large maps accompanying this report.

### **Mapping**

**Sheet 1, Map 1** illustrates in outline form the proposed divisions for Kent. **You can also view our draft recommendations for Kent on our interactive maps at <http://consultation.lgbce.org.uk>**

## Parish electoral arrangements

26 As part of an electoral review, we are required to have regard to the statutory criteria set out in Schedule 2 to the Local Democracy, Economic Development and Construction Act 2009 (the 2009 Act). The Schedule provides that if a parish is to be divided between different divisions it must also be divided into parish wards, so that each parish ward lies wholly within a single division. We cannot recommend changes to the external boundaries of parishes as part of an electoral review.

27 Under the 2009 Act we only have the power to make changes to parish electoral arrangements where these are as a direct consequence of our recommendations for principal authority warding arrangements. However, the district and borough councils in Kent have powers under the Local Government and Public Involvement in Health Act 2007 to conduct community governance reviews to effect changes to parish electoral arrangements.



28 As a result of our proposed ward boundaries and having regard to the statutory criteria set out in schedule 2 to the 2009 Act, we are providing revised parish electoral arrangements for Chartham Parish in Canterbury City.

**Draft recommendation**

Chartham Parish Council should comprise 11 councillors, as at present, representing two wards: Chartham & Chartham Hatch (returning 7 members) and St Augustine's (returning four members).

The proposed parish ward boundaries are illustrated and named on Map 1.

29 As a result of our proposed ward boundaries and having regard to the statutory criteria set out in schedule 2 to the 2009 Act, we are providing revised parish electoral arrangements for Shorne Parish in Gravesham Borough.

**Draft recommendation**

Shorne Parish Council should comprise nine councillors, as at present, representing two wards: Shorne North (returning two members) and Shorne Village (returning seven members).

The proposed parish ward boundaries are illustrated and named on Map 1.

30 As result of our proposed ward boundaries and having regard to the statutory criteria set out in schedule 2 to the 2009 Act, we are providing revised parish electoral arrangements for Folkestone in Shepway District.

**Draft recommendation**

Folkestone Town Council should comprise 18 councillors, the same as at present, representing seven wards: Broadmead (returning two members), Central (returning four members), Cheriton East (returning one members), Cheriton West (returning three members), East Folkestone (returning four members), Harbour (returning three members) and Harvey West (returning one member).

The proposed parish ward boundaries are illustrated and named on Map 1.

31 As result of our proposed ward boundaries and having regard to the statutory criteria set out in schedule 2 to the 2009 Act, we are providing revised parish electoral arrangements for Faversham in Swale Borough.

**Draft recommendation**

Faversham Town Council should comprise 14 councillors, as at present, representing five wards: Abbey (returning four members), Davington Priory (returning two members), St Ann's (returning four members), Watling Ospringe (returning two members) and Watling Preston (returning two members).

The proposed parish ward boundaries are illustrated and named on Map 1.

32 As a result of our proposed ward boundaries and having regard to the statutory criteria set out in schedule 2 to the 2009 Act, we are providing revised parish electoral arrangements for Ditton parish in Tonbridge & Malling Borough.

## Agenda Item 7

**Draft recommendation**

Ditton Parish Council should comprise 13 councillors, as at present, representing two wards: Ditton North (returning four members) and Ditton South (returning nine members).

The proposed parish ward boundaries are illustrated and named on Map 1.

### 3 Have your say

33 The Commission has an open mind about its draft recommendations. Every representation we receive will be considered, regardless of whom it is from or whether it relates to the whole county or just a part of it.

34 If you agree with our recommendations, please let us know. If you don't think our recommendations are right for Kent, we want to hear alternative proposals for a different pattern of divisions.

35 Our website has a special consultation area where you can explore the maps and draw your own proposed boundaries. You can find it at [\*\*consultation.lgbce.org.uk\*\*](http://consultation.lgbce.org.uk)

Submissions can also be made by emailing [\*\*reviews@lgbce.org.uk\*\*](mailto:reviews@lgbce.org.uk) or by writing to:

**Review Officer (Kent)**  
**The Local Government Boundary Commission for England**  
**14<sup>th</sup> Floor, Millbank Tower**  
**Millbank**  
**London**  
**SW1P 4QP**

The Commission aims to propose a pattern of divisions for Kent which delivers:

- Electoral equality: each local councillor represents a similar number of voters
- Community identity: reflects the identity and interests of local communities
- Effective and convenient local government: helping your council discharge its responsibilities effectively

A good pattern of divisions should:

- Provide good electoral equality, with each councillor representing, as closely as possible, the same number of voters
- Reflect community interests and identities and include evidence of community links
- Be based on strong, easily identifiable boundaries
- Help the council deliver effective and convenient local government

Electoral equality:

- Does your proposal mean that councillors would represent roughly the same number of voters as elsewhere in the council area?

Community identity:

- Community groups: is there a parish council, residents' association or other group that represents the area?
- Interests: what issues bind the community together or separate it from other parts of your area?
- Identifiable boundaries: are there natural or constructed features which make strong boundaries for your proposals?

Effective local government:

- Are any of the proposed divisions too large or small to be represented effectively?

## Agenda Item 7

- Are the proposed names of the divisions appropriate?
- Are there good links across your proposed divisions? Is there any form of public transport?

36 Please note that the consultation stages of an electoral review are public consultations. In the interests of openness and transparency, we make available for public inspection full copies of all representations the Commission takes into account as part of a review. Accordingly, copies of all representations will be placed on deposit at our offices in Millbank Tower (London) and on our website at [www.lgbce.org.uk](http://www.lgbce.org.uk). A list of respondents will be available from us on request after the end of the consultation period.

37 If you are a member of the public and not writing on behalf of a council or organisation we will remove any personal identifiers, such as postal or email addresses, signatures or phone numbers from your submission before it is made public. We will remove signatures from all letters, no matter who they are from.

38 In the light of representations received, we will review our draft recommendations and consider whether they should be altered. As indicated earlier, it is therefore important that all interested parties let us have their views and evidence, **whether or not** they agree with the draft recommendations. We will then publish our final recommendations.

39 After the publication of our final recommendations, the changes we have proposed must be approved by Parliament. An Order – the legal document which brings into force our recommendations – will be laid in draft in Parliament. The draft Order will provide for new electoral arrangements to be implemented at the next elections for Kent County Council in 2017.

## Equalities

40 This report has been screened for impact on equalities; with due regard being given to the general equalities duties as set out in section 149 of the Equality Act 2010. As no potential negative impacts were identified, a full equality impact analysis is not required.

## Appendix A

**Table A1: Draft recommendations for Kent County Council**

Division name	Number of councillors	Electorate (2014)	Number of electors per councillor	Variance from average %	Electorate (2020)	Number of electors per councillor	Variance from average %	
Ashford District								
1	Ashford Central	1	12,341	12,341	-9%	13,993	13,993	-2%
2	Ashford East	1	12,938	12,938	-4%	14,272	14,272	0%
3	Ashford Rural East	1	12,625	12,625	-6%	13,488	13,488	-6%
4	Ashford Rural South	1	13,137	13,137	-3%	13,916	13,916	-3%
5	Ashford Rural West	1	13,820	13,820	2%	13,554	13,554	-5%
6	Ashford South	1	12,332	12,332	-9%	15,060	15,060	5%
7	Tenterden	1	13,354	13,354	-1%	13,630	13,630	-5%
Canterbury City								
8	Canterbury City North	1	14,524	14,524	8%	15,221	15,221	7%
9	Canterbury City South	1	14,032	14,032	4%	14,709	14,709	3%

**Table A1: (cont.) Draft recommendations for Kent County Council**

	<b>Division name</b>	<b>Number of councillors</b>	<b>Electorate (2014)</b>	<b>Number of electors per councillor</b>	<b>Variance from average %</b>	<b>Electorate (2020)</b>	<b>Number of electors per councillor</b>	<b>Variance from average %</b>
10	Canterbury North	1	14,696	14,696	9%	15,401	15,401	8%
11	Canterbury South	1	12,653	12,653	-6%	13,261	13,261	-7%
12	Herne Bay East	1	13,955	13,955	3%	14,624	14,624	2%
13	Herne Village & Sturry	1	14,743	14,743	9%	15,451	15,451	8%
14	Whitstable East & Herne Bay West	1	13,790	13,790	2%	14,450	14,450	1%
15	Whitstable West	1	14,413	14,413	7%	15,104	15,104	6%
<b>Dartford Borough</b>								
16	Dartford East	1	12,214	12,214	-9%	13,988	13,988	-2%
17	Dartford North East	1	11,679	11,679	-13%	14,660	14,660	3%
18	Dartford Rural	1	12,997	12,997	-4%	13,660	13,660	-4%
19	Dartford West	1	12,783	12,783	-5%	14,038	14,038	-2%
20	Swanscombe & Greenhithe	1	10,037	10,037	-26%	15,271	15,271	7%

**Table A1: (cont.) Draft recommendations for Kent County Council**

	<b>Division name</b>	<b>Number of councillors</b>	<b>Electorate (2014)</b>	<b>Number of electors per councillor</b>	<b>Variance from average %</b>	<b>Electorate (2020)</b>	<b>Number of electors per councillor</b>	<b>Variance from average %</b>
21	Wilmington	1	13,435	13,435	0%	13,851	13,851	-3%
<b>Dover District</b>								
22	Deal Town	2	24,106	12,053	-11%	26,302	13,151	-8%
23	Dover North	1	11,003	11,003	-18%	13,896	13,896	-3%
24	Dover Town	2	24,468	12,234	-9%	26,655	13,328	-7%
25	Dover West	1	12,193	12,193	-10%	13,060	13,060	-9%
26	Sandwich	1	12,944	12,944	-4%	14,527	14,527	2%
<b>Gravesham Borough</b>								
27	Gravesend Central	2	29,646	14,823	10%	30,281	15,141	6%
28	Gravesend North	1	14,505	14,505	8%	15,177	15,177	6%
29	Gravesham Rural	1	15,413	15,413	14%	15,469	15,469	8%
30	Northfleet	1	14,376	14,376	7%	15,358	15,358	7%

**Table A1: (cont.) Draft recommendations for Kent County Council**

Division name	Number of councillors	Electorate (2014)	Number of electors per councillor	Variance from average %	Electorate (2020)	Number of electors per councillor	Variance from average %	
Maidstone Borough								
31	Maidstone Central	2	26,401	13,201	-2%	28,376	14,188	-1%
32	Maidstone North East	1	13,299	13,299	-1%	13,970	13,970	-2%
33	Maidstone Rural East	1	13,748	13,748	2%	14,494	14,494	1%
34	Maidstone Rural North	1	14,536	14,536	8%	15,201	15,201	6%
35	Maidstone Rural South	1	12,526	12,526	-7%	13,173	13,173	-8%
36	Maidstone Rural West	1	12,623	12,623	-6%	13,414	13,414	-6%
37	Maidstone South	1	13,699	13,699	2%	14,692	14,692	3%
38	Maidstone South East	1	12,144	12,144	-10%	13,777	13,777	-4%
Sevenoaks District								
39	Darent Valley	1	14,966	14,966	11%	14,740	14,740	3%
40	Sevenoaks East	1	14,322	14,322	6%	14,194	14,194	-1%



**Table A1: (cont.) Draft recommendations for Kent County Council**

	<b>Division name</b>	<b>Number of councillors</b>	<b>Electorate (2014)</b>	<b>Number of electors per councillor</b>	<b>Variance from average %</b>	<b>Electorate (2020)</b>	<b>Number of electors per councillor</b>	<b>Variance from average %</b>
41	Sevenoaks North East	1	14,628	14,628	8%	14,154	14,154	-1%
42	Sevenoaks Rural	1	15,591	15,591	16%	15,343	15,343	7%
43	Sevenoaks West	1	13,451	13,451	0%	13,804	13,804	-3%
44	Swanley	1	15,790	15,790	17%	15,787	15,787	10%
Shepway District								
45	Cheriton, Sandgate & Hythe East	1	14,252	14,252	6%	14,790	14,790	4%
46	Elham Valley	1	13,999	13,999	4%	14,527	14,527	2%
47	Folkestone East	1	12,962	12,962	-4%	13,453	13,453	-6%
48	Folkestone West	1	13,381	13,381	-1%	13,886	13,886	-3%
49	Hythe West	1	13,878	13,878	3%	14,402	14,402	1%
50	Romney Marsh	1	14,013	14,013	4%	14,545	14,545	2%

Table A1: (cont.) Draft recommendations for Kent County Council

	Division name	Number of councillors	Electorate (2014)	Number of electors per councillor	Variance from average %	Electorate (2020)	Number of electors per councillor	Variance from average %
Swale Borough								
51	Mid Swale	1	13,895	13,895	3%	14,439	14,439	1%
52	Sheppey	2	29,216	14,608	8%	30,359	15,180	6%
53	Sittingbourne North	1	13,936	13,936	3%	14,483	14,483	1%
54	Sittingbourne South	1	13,496	13,496	0%	14,024	14,024	-2%
55	Swale East	1	12,892	12,892	-4%	13,401	13,401	-6%
56	Swale West	1	14,964	14,964	11%	15,551	15,551	9%
Thanet District								
57	Birchington & Rural	2	27,479	13,740	2%	29,363	14,682	3%
58	Broadstairs	1	14,170	14,170	5%	14,810	14,810	4%
59	Cliftonville	1	13,256	13,256	-2%	13,731	13,731	-4%
60	Margate	1	13,731	13,731	2%	14,328	14,328	0%

**Table A1: (cont.) Draft recommendations for Kent County Council**

	<b>Division name</b>	<b>Number of councillors</b>	<b>Electorate (2014)</b>	<b>Number of electors per councillor</b>	<b>Variance from average %</b>	<b>Electorate (2020)</b>	<b>Number of electors per councillor</b>	<b>Variance from average %</b>
61	Ramsgate	2	27,802	13,901	3%	29,240	14,620	2%
<b>Tonbridge &amp; Malling Borough</b>								
62	Malling Central	1	13,594	13,594	0%	14,691	14,691	3%
63	Malling North	1	13,212	13,212	-2%	14,279	14,279	0%
64	Malling North East	1	12,763	12,763	-5%	13,793	13,793	-3%
65	Malling Rural East	1	13,541	13,541	0%	14,637	14,637	2%
66	Malling West	1	12,428	12,428	-8%	13,431	13,431	-6%
67	Tonbridge	2	25,459	12,730	-6%	27,516	13,758	-4%
<b>Tunbridge Wells Borough</b>								
68	Cranbrook	1	13,898	13,898	3%	13,830	13,830	-3%
69	Tunbridge Wells East	1	13,140	13,140	-3%	13,201	13,201	-8%
70	Tunbridge Wells North	1	13,703	13,703	2%	13,362	13,362	-6%
71	Tunbridge Wells Rural	1	13,059	13,059	-3%	13,147	13,147	-8%

Table A1: (cont.) Draft recommendations for Kent County Council

	Division name	Number of councillors	Electorate (2014)	Number of electors per councillor	Variance from average %	Electorate (2020)	Number of electors per councillor	Variance from average %
72	Tunbridge Wells South	1	13,377	13,377	-1%	14,582	14,582	2%
73	Tunbridge Wells West	1	14,279	14,279	6%	14,096	14,096	-1%
<b>Totals</b>		<b>81</b>	<b>1,092,651</b>	<b>-</b>	<b>-</b>	<b>1,157,343</b>	<b>-</b>	<b>-</b>
<b>Averages</b>		<b>-</b>	<b>-</b>	<b>13,490</b>	<b>-</b>	<b>-</b>	<b>14,288</b>	<b>-</b>

Source: Electorate figures are based on information provided by Kent County Council

Note: The 'variance from average' column shows by how far, in percentage terms, the number of electors per councillor in each electoral ward varies from the average for the district. The minus symbol (-) denotes a lower than average number of electors. Figures have been rounded to the nearest whole number.

## Appendix B

### Submissions received

All submissions received can also be viewed on our website at

#### **Local authority**

- Kent County Council

#### **Political groups**

- Kent County Council Labour Group
- Kent County Council Liberal Democrat Group for Maidstone
- Kent County Council UKIP Group for Swale
- Canterbury & Coastal Liberal Democrats

#### **District councils**

- Sevenoaks District Council
- Tonbridge & Malling Borough Council
- Tunbridge Wells Borough Council

#### **Councillors**

- County Councillor T. Dean
- County Councillor M. Baldock
- County Councillor M. Whybrow
- County Councillor P. Stockell
- Dartford Borough Councillor D. Swinerd

#### **Parish and town councils**

- Herne & Broomfield Parish Council (two submissions)
- Ditton Parish Council
- Biddenden Parish Council
- Lamberhurst Parish Council
- Boughton Monchelsea Parish Council
- Edenbridge Town Council
- Iwade Parish Council
- Crockenhill Parish Council
- Faversham Town Council
- Teston Parish Council
- Bekesbourne-with-Patrixbourne Parish Council
- Hythe Town Council
- Ightham Parish Council
- Shoreham Parish Council
- Hextable Parish Council

## Agenda Item 7

- Wingham Parish Council
- Hildenborough Parish Council
- New Romney Town Council
- Burmarsh Parish Council
- Sholden Parish Council
- Marden Parish Council
- Littlebourne Parish Council
- Southfleet Parish Council
- Kemsing Parish Council
- Teynham Parish Council
- Rodmersham Parish Council & Milstead Parish Council (Joint Submission)
- Sandwich Town Council
- Swanscombe & Greenhithe Town Council
- Hawkinge Town Council
- Snodland Council
- West Malling Parish Council

### **Local organisations**

- NHS Dartford, Gravesham and Swanley and NHS Swale Clinical Commissioning Groups
- Kennington Community Forum
- Kent Association of Local Councils

### **Residents**

- 11 local residents

## Appendix C

### Glossary and abbreviations

Council size	The number of councillors elected to serve on a council
Electoral Change Order (or Order)	A legal document which implements changes to the electoral arrangements of a local authority
Division	A specific area of a county, defined for electoral, administrative and representational purposes. Eligible electors can vote in whichever division they are registered for the candidate or candidates they wish to represent them on the county council
Electoral fairness	When one elector's vote is worth the same as another's
Electoral inequality	Where there is a difference between the number of electors represented by a councillor and the average for the local authority
Electorate	People in the authority who are registered to vote in elections. For the purposes of this report, we refer specifically to the electorate for local government elections
Number of electors per councillor	The total number of electors in a local authority divided by the number of councillors
Over-represented	Where there are fewer electors per councillor in a ward or division than the average

## Agenda Item 7

Parish	A specific and defined area of land within a single local authority enclosed within a parish boundary. There are over 10,000 parishes in England, which provide the first tier of representation to their local residents
Parish council	A body elected by electors in the parish which serves and represents the area defined by the parish boundaries. See also 'Town council'
Parish (or Town) council electoral arrangements	The total number of councillors on any one parish or town council; the number, names and boundaries of parish wards; and the number of councillors for each ward
Parish ward	A particular area of a parish, defined for electoral, administrative and representational purposes. Eligible electors vote in whichever parish ward they live for candidate or candidates they wish to represent them on the parish council
Town council	A parish council which has been given ceremonial 'town' status. More information on achieving such status can be found at <a href="http://www.nalc.gov.uk">www.nalc.gov.uk</a>
Under-represented	Where there are more electors per councillor in a ward or division than the average
Variance (or electoral variance)	How far the number of electors per councillor in a ward or division varies in percentage terms from the average
Ward	A specific area of a district or borough, defined for electoral, administrative and representational purposes. Eligible electors can vote in whichever ward they are registered for the candidate or candidates they wish to represent them on the district or borough council



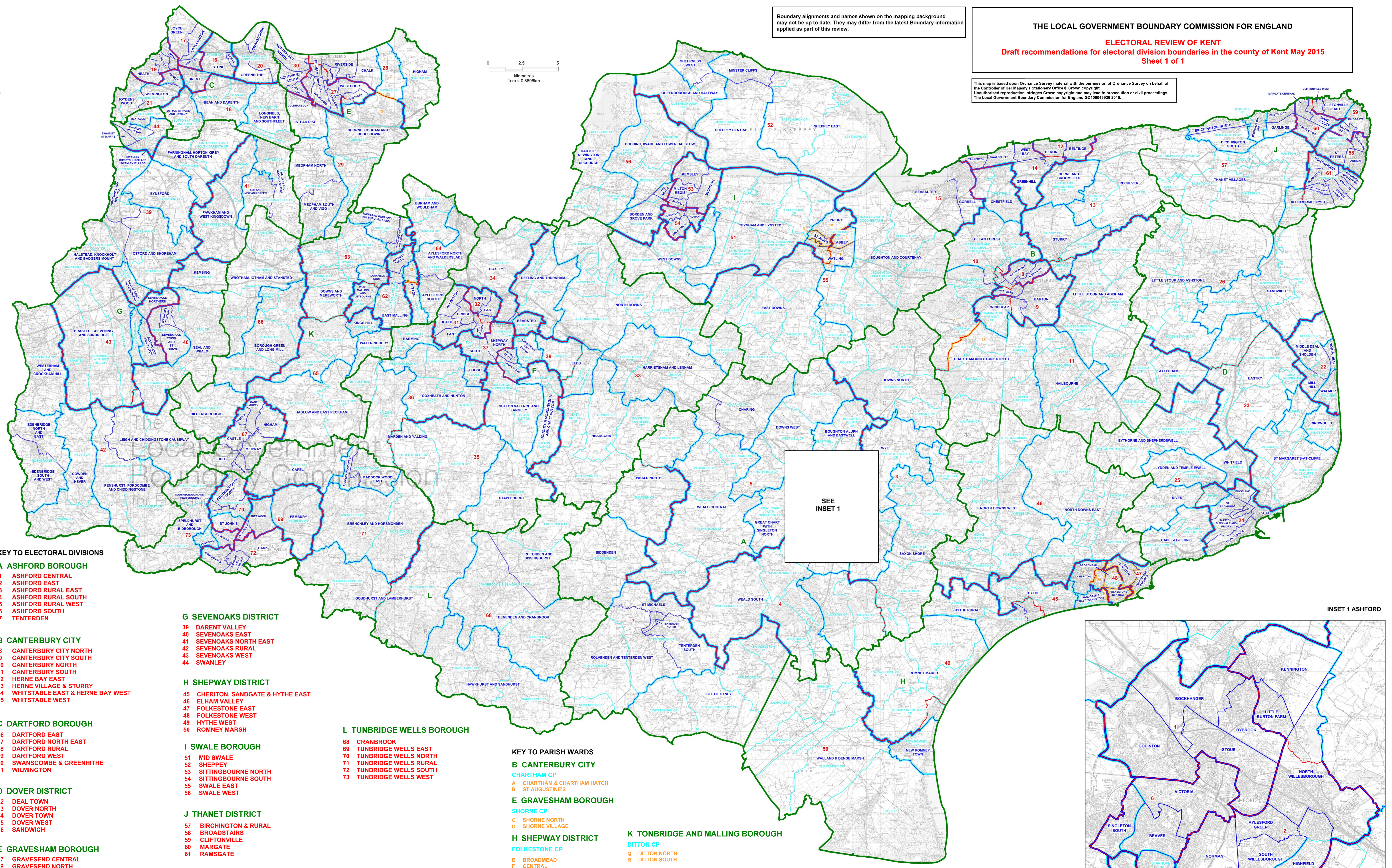
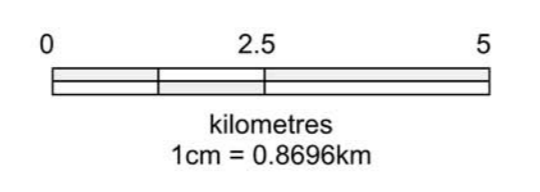


This page is intentionally left blank

Boundary alignments and names shown on the mapping background may not be up to date. They may differ from the latest Boundary information applied as part of this review.

THE LOCAL GOVERNMENT BOUNDARY COMMISSION FOR ENGLAND  
ELECTORAL REVIEW OF KENT  
Draft recommendations for electoral division boundaries in the county of Kent May 2015  
Sheet 1 of 1

This map is based upon Ordnance Survey material with the permission of Ordnance Survey on behalf of the Controller of Her Majesty's Stationery Office © Crown copyright.  
Unauthorised reproduction infringes Crown copyright and may lead to prosecution or civil proceedings.  
The Local Government Boundary Commission for England GD100549526 2015.



KEY TO ELECTORAL DIVISIONS

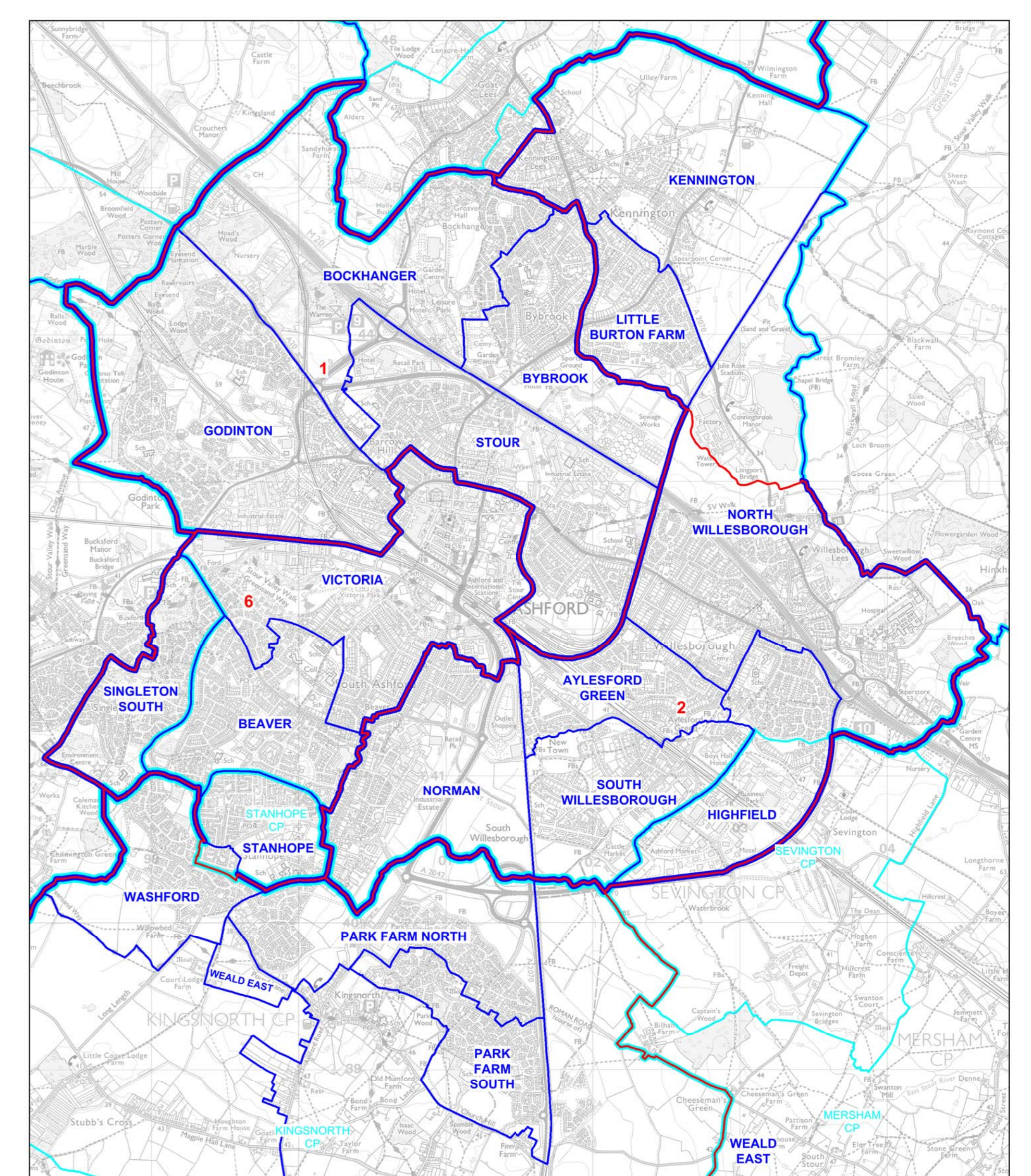
- A ASHFORD BOROUGH**
  - 1 ASHFORD CENTRAL
  - 2 ASHFORD EAST
  - 3 ASHFORD RURAL EAST
  - 4 ASHFORD RURAL SOUTH
  - 5 ASHFORD RURAL WEST
  - 6 ASHFORD SOUTH
  - 7 TENTERDEN
- B CANTERBURY CITY**
  - 8 CANTERBURY CITY NORTH
  - 9 CANTERBURY CITY SOUTH
  - 10 CANTERBURY NORTH
  - 11 CANTERBURY SOUTH
  - 12 HERNE BAY EAST
  - 13 HERNE VILLAGE & STURRY
  - 14 WHITSTABLE EAST & HERNE BAY WEST
  - 15 WHITSTABLE WEST
- C DARTFORD BOROUGH**
  - 16 DARTFORD EAST
  - 17 DARTFORD NORTH EAST
  - 18 DARTFORD RURAL
  - 19 DARTFORD WEST
  - 20 SWANSCOMBE & GREENHITHE
  - 21 WILMINGTON
- D DOVER DISTRICT**
  - 22 DEAL TOWN
  - 23 DOVER NORTH
  - 24 DOVER TOWN
  - 25 DOVER WEST
  - 26 SANDWICH
- E GRAVESHAM BOROUGH**
  - 27 GRAVESEND CENTRAL
  - 28 GRAVESEND NORTH
  - 29 GRAVESHAM RURAL
  - 30 NORTHFLEET
- F MAIDSTONE BOROUGH**
  - 31 MAIDSTONE CENTRAL
  - 32 MAIDSTONE NORTH EAST
  - 33 MAIDSTONE RURAL EAST
  - 34 MAIDSTONE RURAL NORTH
  - 35 MAIDSTONE RURAL SOUTH
  - 36 MAIDSTONE RURAL WEST
  - 37 MAIDSTONE SOUTH
  - 38 MAIDSTONE SOUTH EAST
- G SEVENOAKS DISTRICT**
  - 39 DARENT VALLEY
  - 40 SEVENOAKS EAST
  - 41 SEVENOAKS NORTH EAST
  - 42 SEVENOAKS RURAL
  - 43 SEVENOAKS WEST
  - 44 SWANLEY
- H SHEPWAY DISTRICT**
  - 45 CHERITON, SANDGATE & HYTHE EAST
  - 46 ELHAM VALLEY
  - 47 FOLKESTONE EAST
  - 48 FOLKESTONE WEST
  - 49 HYTHE WEST
  - 50 ROMNEY MARSH
- I SWALE BOROUGH**
  - 51 MID SWALE
  - 52 SHEPPEY
  - 53 SITTINGBOURNE NORTH
  - 54 SITTINGBOURNE SOUTH
  - 55 SWALE EAST
  - 56 SWALE WEST
- J THANET DISTRICT**
  - 57 BIRCHINGTON & RURAL
  - 58 BROADSTAIRS
  - 59 CLIFTONVILLE
  - 60 MARGATE
  - 61 RAMSGATE
- K TONBRIDGE AND MALLING BOROUGH**
  - 62 MALLING CENTRAL
  - 63 MALLING NORTH
  - 64 MALLING NORTH EAST
  - 65 MALLING RURAL EAST
  - 66 MALLING RURAL WEST
  - 67 TONBRIDGE
- L TUNBRIDGE WELLS BOROUGH**
  - 68 CRANBROOK
  - 69 TUNBRIDGE WELLS EAST
  - 70 TUNBRIDGE WELLS NORTH
  - 71 TUNBRIDGE WELLS RURAL
  - 72 TUNBRIDGE WELLS SOUTH
  - 73 TUNBRIDGE WELLS WEST

KEY TO PARISH WARDS

- B CANTERBURY CITY**
  - CHARTHAM CP
  - A CHARTHAM & CHARTHAM HATCH
  - B ST AUGUSTINE'S
- E GRAVESHAM BOROUGH**
  - SHORNE CP
  - C SHORNE NORTH
  - D SHORNE VILLAGE
- H SHEPWAY DISTRICT**
  - FOLKESTONE CP
  - E BROADMEAD
  - F CENTRAL
  - G CHERITON EAST
  - H CHERITON WEST
  - I EAST FOLKESTONE
  - J HARBOUR
  - K HARVEY WEST
- I SWALE BOROUGH**
  - FAVERSHAM CP
  - L ABBEY
  - M DAVINGTON PRIORY
  - N ST ANN'S
  - O WATLING OSPRINGE
  - P WATLING PRESTON

KEY	
	DISTRICT/BOROUGH/CITY COUNCIL BOUNDARY
	PROPOSED ELECTORAL DIVISION BOUNDARY
	PARISH BOUNDARY
	PROPOSED ELECTORAL DIVISION BOUNDARY COINCIDENT WITH WARD BOUNDARY
	PROPOSED ELECTORAL DIVISION BOUNDARY COINCIDENT WITH PROPOSED PARISH WARD BOUNDARY
	WARD BOUNDARY COINCIDENT WITH PARISH BOUNDARY
	WARD BOUNDARY COINCIDENT WITH PROPOSED PARISH WARD BOUNDARY
	PROPOSED ELECTORAL DIVISION BOUNDARY COINCIDENT WITH WARD BOUNDARY AND PARISH BOUNDARY
	PROPOSED ELECTORAL DIVISION BOUNDARY COINCIDENT WITH WARD BOUNDARY AND PROPOSED PARISH WARD BOUNDARY
	HYTHE
	HYTHE CP
	PARISH NAME

INSET 1 ASHFORD



This page is intentionally left blank

Kent Districts Analysis

APPENDIX D
------------

CURRENT				
	2020	Current	Electors	%
	Electorate	Wards	per Member	<i>Variance</i>
Ashford	97,913	7	13,988	1.52
Canterbury	118,221	9	13,136	- 4.66
Dartford	85,468	6	14,245	3.39
Dover	94,440	7	13,491	- 2.08
Gravesham	76,285	5	15,257	10.74
Maidstone	127,097	9	14,122	2.50
SEVENOAKS	88,022	7	12,575	- 8.73
Shepway	85,603	6	14,267	3.55
Swale	102,257	7	14,608	6.03
Thanet	101,472	8	12,684	- 7.94
Tonbridge & Malling	98,347	7	14,050	1.97
Tunbridge Wells	82,218	6	13,703	- 0.54
	1,157,343	84	13,778	

PROPOSED				
	2020	Proposed	Electors	%
	Electorate	Wards	per Member	<i>Variance</i>
		7	13,988	- 2.10
		8	14,778	3.43
		6	14,245	- 0.30
		7	13,491	- 5.58
		5	15,257	6.78
		9	14,122	- 1.16
		6	14,670	2.67
		6	14,267	- 0.15
		7	14,608	2.24
		7	14,496	1.45
		7	14,050	- 1.67
		6	13,703	- 4.10
		81	14,288	

# Agenda Item 7

KCC Review = Current Division Analysis

APPENDIX E

Polling district	Parish	Existing county division	Electorate 2020	
AE	Badgers Mount	Darent Valley	520	
AN	Crockenhill	Darent Valley	1,287	
AV	Eynsford	Darent Valley	1,459	
AW	Farningham	Darent Valley	1,041	
BE, BF	Horton Kirby and South Darent	Darent Valley	2,654	
CG, CH	Shoreham	Darent Valley	1,063	
CK, CL	Swanley TC - Christchurch	Darent Valley	4,425	
CO	Swanley TC - Swanley Village	Darent Valley	371	12,820
BN	Riverhead	Sevenoaks Central	2,152	
BV, BW	Sevenoaks TC - Eastern	Sevenoaks Central	2,924	
BX, BY, CA	Sevenoaks TC - Kippington	Sevenoaks Central	3,389	
BZ, CC	Sevenoaks TC - St John's	Sevenoaks Central	2,286	
BU, CB	Sevenoaks TC - Town	Sevenoaks Central	2,628	13,379
BG, BH	Kemsing	Sevenoaks East	3,217	
BK	Otford	Sevenoaks East	2,662	
BO, BP, BQ	Seal	Sevenoaks East	1,875	
BR, BS, BT	Sevenoaks TC - Northern	Sevenoaks East	3,164	
CD	Sevenoaks TC - Wildernesse	Sevenoaks East	324	
CE	Sevenoaks Weald	Sevenoaks East	931	12,173
AA, AB, AC, AD	Ash cum Ridley	Sevenoaks North East	5,001	
AX	Fawkham	Sevenoaks North East	440	
AZ, BA	Hartley	Sevenoaks North East	4,384	
CS, CT, CU, CV	West Kingsdown	Sevenoaks North East	4,329	14,154
AI, AJ, AK, AL	Chiddingstone	Sevenoaks South	938	
AM	Cowden	Sevenoaks South	608	
AP, AQ, AR, AS, AT, AU	Edenbridge	Sevenoaks South	6,735	
BB, BC	Hever	Sevenoaks South	947	
BJ	Leigh	Sevenoaks South	1,522	
BL, BM	Penshurst	Sevenoaks South	1,325	12,075
AF, AG	Brasted	Sevenoaks West	1,113	
AH	Chevening	Sevenoaks West	2,311	
AO	Dunton Green	Sevenoaks West	2,028	
AY	Halstead	Sevenoaks West	1,244	
BI	Knockholt	Sevenoaks West	971	
CI, CJ	Sundridge	Sevenoaks West	1,495	
CQ, CR	Westerham	Sevenoaks West	3,268	12,430
BD	Hextable	Swanley	3,282	
CM	Swanley TC - St Mary's	Swanley	3,103	
CN, CP	Swanley TC - White Oak	Swanley	4,606	10,991
			88,022	88,022

Name of division	Number of cllrs per division	Electorate 2020	Variance 2020
Sevenoaks Central	1	13,379	-2.90
Sevenoaks North East	1	14,154	2.73
Sevenoaks South	1	12,075	-12.36
Sevenoaks West	1	12,430	-9.78
Sevenoaks East	1	12,173	-11.65
Darent Valley	1	12,820	-6.95
Swanley	1	10,991	-20.23
		88,022	

## KCC Review = Proposed Division Analysis

APPENDIX F

<u>Parish</u>	<u>District Ward</u>	<u>Parliamentary</u>	<u>2020 ELECTORATE</u>	<u>KCC PROPOSED DIVISION</u>
Badgers Mount	Halstead Knockholt & B	Sevenoaks AE	520	Darent Valley
Crockenhill	Crockenhill & Well Hill	Sevenoaks AN	1,287	Darent Valley
Dunton Green	Dunton Green & Riverhe	Sevenoaks AO	2,028	Darent Valley
Eynsford	Eynsford	Sevenoaks AV	1,459	Darent Valley
Farningham	Farningham Horton Kirb	Sevenoaks AW	1,041	Darent Valley
Halstead	Halstead Knockholt & B	Sevenoaks AY	1,244	Darent Valley
Horton Kirby & South Darent	Farningham Horton Kirb	Sevenoaks BE, BF	2,654	Darent Valley
Knockholt	Halstead Knockholt & B	Sevenoaks BI	971	Darent Valley
Otford	Otford & Shoreham	Sevenoaks BK	2,662	Darent Valley
Shoreham	Otford & Shoreham	Sevenoaks CF, CG, CH	1,063	14,929 Darent Valley
Kemsing	Kemsing	Sevenoaks BG, BH	3,217	Sevenoaks East
Seal	Seal & Weald	Sevenoaks BO, BP, BQ	1,875	Sevenoaks East
Sevenoaks TC - Eastern	Sevenoaks Eastern	Sevenoaks BV, BW	2,924	Sevenoaks East
Sevenoaks TC - St Johns	Sevenoaks Town & St Jc	Sevenoaks BZ, CC	2,286	Sevenoaks East
Sevenoaks TC - Town	Sevenoaks Town & St Jc	Sevenoaks BU, CB	2,628	Sevenoaks East
Sevenoaks TC - Wildernesse	Seal & Weald	Sevenoaks CD	324	Sevenoaks East
Sevenoaks Weald	Seal & Weald	Sevenoaks CE	931	14,185 Sevenoaks East
Ash Cum Ridley	Ash & New Ash Green	Sevenoaks AA, AB, AC, A	5,001	Sevenoaks North East
Fawkham	Fawkham & West Kings	Sevenoaks AX	440	Sevenoaks North East
Hartley	Hartley & Hodsoll street	Dartford AZ, BA	4,384	Sevenoaks North East
West Kingsdown	Fawkham & West Kings	Sevenoaks CS, CU, CV, C	4,329	14,154 Sevenoaks North East
Chiddingstone	Leigh & Chiddingstone C	Tonbridge & I AJ, AI, AK, AL	938	Sevenoaks Rural
Cowden	Cowden & Hever	Tonbridge & I AM	608	Sevenoaks Rural
Edenbridge	Edenbridge North & Eas	Tonbridge & I AP, AS, AU, A	6,735	Sevenoaks Rural
Hever	Cowden & Hever	Tonbridge & I BB, BC	947	Sevenoaks Rural
Leigh	Leigh & Chiddingstone C	Tonbridge & I BJ	1,522	Sevenoaks Rural
Penshurst	Penshurst Fordcombe &	Tonbridge & I BL, BM	1,325	Sevenoaks Rural
Westerham	Westerham & Crockham	Sevenoaks CQ, CR	3,268	15,343 Sevenoaks Rural
Brasted	Brasted Chevening & Su	Sevenoaks AF, AG	1,113	Sevenoaks West
Chevening	Brasted Chevening & Su	Sevenoaks AH	2,311	Sevenoaks West
Riverhead	Dunton Green & Riverhe	Sevenoaks BN	2,152	Sevenoaks West
Sevenoaks TC - Kippington	Sevenoaks Kippington	Sevenoaks BX, BY, CA	3,389	Sevenoaks West
Sevenoaks TC - Northern	Sevenoaks Northern	Sevenoaks BR, BS, BT	3,164	Sevenoaks West
Sundridge with Ide Hill	Brasted Chevening & Su	Sevenoaks CI, CJ	1,495	13,624 Sevenoaks West
Hextable	Hextable	Sevenoaks BD	3,282	Swanley
Swanley TC - Christchurch	Swanley Christchurch &	Sevenoaks CK, CL	4,425	Swanley
Swanley TC - St Marys	Swanley St Marys	Sevenoaks CM	3,103	Swanley
Swanley TC - Swanley Village	Swanley Christchurch &	Sevenoaks CO	371	Swanley
Swanley TC - White Oak	Swanley White Oak	Sevenoaks CN, CP	4,606	15,787 Swanley
			88,022	88,022

Name of division	Number of cllrs per division	Electorate 2020	Variance 2020
Sevenoaks East	1	14,185	-0.72
Sevenoaks North East	1	14,154	-0.94
Sevenoaks Rural	1	15,343	7.38
Sevenoaks West	1	13,624	-4.65
Darent Valley	1	14,929	4.49
Swanley	1	15,787	10.49

88,022

This page is intentionally left blank



## **EQUALITIES ANNUAL REPORT**

### **Legal and Democratic Advisory Committee – 2 July 2015**

Report of: Chief Executive  
Status: For Consideration  
Key Decision: No

---

**This report supports the Council’s promise to provide value for money.**

**Portfolio Holder** Cllr. Anna Firth

**Contact Officer(s)** Lee Banks, Ext 7161 and Sarah Lavallie, Ext 7201

---

#### **Recommendation to Legal and Democratic Advisory Committee:**

Members note progress against the Council’s equality aims and commitments.

---

**Reason for recommendation:** to maintain a strong record of ensuring our services are responsive to the needs of our residents and customers, whilst taking a proportionate response to implementing equalities legislation.

---

#### **Introduction and Background**

- 1 The West Kent Equality Partnership aims and commitments 2012 to 2016 are within the Council’s Policy Framework and were approved by Cabinet on 8 March 2012.
- 2 The West Kent Equality Partnership was formed in 2010 between Sevenoaks District Council, Tonbridge and Malling Borough Council and Tunbridge Wells Borough Council. The work of the partnership enables each authority to maintain a strong record of ensuring its services are responsive to the needs of our residents and customers, whilst taking a proportionate response to implementing equalities legislation.
- 3 The Equality Act (2010) sets out a ‘Public Sector Equality Duty’ which requires public authorities to have ‘due regard’ to the need to eliminate discrimination, advance equality of opportunity, and foster good relations between different people when carrying out their day to day work – in shaping policy, in delivering services and in relation to their own employees. As part of the duty, the Council is required to prepare and publish one or more objectives and review these at least every four years. The West Kent Equality Partnership developed a joint response to the requirement to publish equality objectives which provides a framework for each authority to set its own action plan and review progress annually. Sevenoaks District Council develops an action plan each year based on assessments carried out by services.

## Agenda Item 8

### **Equalities update**

- 4 The West Kent Equality Partnership's Aims and Commitments 2012 to 2016 set out the Council's commitments as a community leader, as a service provider and as an employer. This report highlights Sevenoaks District Council's progress against these commitments.
- 5 Examples of progress in 2014/15 include providing inclusive sports sessions, renewal of the Armed Forces Community Covenant and maintaining a low gender pay gap between male and female employees.
- 6 Examples of initiatives which commenced in 2014/15 and will continue into 2015-16 include continuing to investigate the housing needs for residents with learning disabilities and continuing to develop dementia friendly communities.
- 7 To assist with these initiatives it is proposed that the Council continues to strengthen its approach by:
  - working with the Sevenoaks District Access Group to develop priorities
  - taking a more evidence based approach to assist with targeting scarce resources
  - developing our action plan into a set of outcome focused equality objectives which focus on the biggest equality challenges and where we can achieve the greatest impact with the resources available to us.
- 8 Set out at Appendix A to this report is the Council's annual report of progress against its Equalities Commitments. Members are asked to consider the report, note the progress being made and highlight any further areas where they believe the Council should be seeking to improve equality in the delivery of its services.

### **Other Options Considered and/or Rejected**

- 9 None.

### **Key Implications**

#### Financial

Understanding the needs of people with protected characteristics under the Equality Act (2010) will assist the Council in allocating resources to areas or services where it is considered to be a greater priority.

#### Legal Implications and Risk Assessment Statement.

This report provides an update against our duties under the Equality Act 2010.

#### Equality Assessment

Members are reminded of the requirement, under the Public Sector Equality Duty (section 149 of the Equality Act 2010) to have due regard to (i) eliminate unlawful discrimination, harassment and victimisation and other conduct prohibited by the Equality Act 2010, (ii) advance equality of opportunity between people from different groups, and (iii) foster good relations between people from different groups. This report presents a review of the

Council's progress under these duties in our roles of community leader, service provider and employer.

### **Conclusions**

This report highlights the work that has been undertaken to ensure we comply with the Equality Act 2010 but also ensure our services meet with and are responsive to the needs of our residents and visitors.

### **Appendices**

Appendix A – Progress against our equality aims and commitments in 2014-15.

### **Background Papers:**

West Kent Equality Partnership Aims and Commitments – Report to Cabinet 8 March 2012.

<http://cds.sevenoaks.gov.uk/ieListDocuments.aspx?CId=120&MId=116&Ver=4>.

**Dr. Pav Ramewal**

**Chief Executive**

This page is intentionally left blank

## Appendix A - Progress against our equality aims and commitments in 2014-15

### As a community leader

#### We will make sure our events and activities are open to all and raise awareness

**Health initiatives:** activities have attracted a larger proportion of younger people in 2014-15, with 60% being aged between 0-19. Activities also continue to attract more females (72%) than males (28%), where participants gave us this information. There has been no change in the proportion of people with a disability attending health activities, at about 4% (of those who gave this information). We have also started to collect information about participants in the 'Be Inspired, Be Active' project to make sure we achieve our aim of providing sports sessions which are inclusive to all. We started to collect information from the last six months which shows that men, women, people aged 20-84+ and people with disabilities have taken part so far.

**Young people:** 1,995 children and young people took part in family fun days over the Easter half-term, summer holidays and autumn half-term in locations across the District.

#### We will record, monitor and respond to 'hate incidents'

**Community safety:** the Community Safety Unit has continued to deal with hate crime. Dedicated officers deal specifically with victims of hate crime and details of any reported crimes are discussed with key partners at daily meetings and actions taken forward as required. There were approximately 56 reports of hate crimes in 2014-15. Due to changes in the way hate crime is recorded, it is not possible to make a direct comparison to figures from previous years.

#### Other actions we will take as a community leader

**Dementia friendly communities:** we are continuing to work with Kent County Council, local groups and residents to develop dementia friendly communities. Over 150 staff have been trained as 'dementia friends'. Dementia friendly groups meet in Swanley and Sevenoaks and we have also met with local stakeholders.

**Community covenant:** the Sevenoaks District Armed Forces Community Covenant, which aims to encourage all parties within the community to offer support to the local Armed Forces community, was renewed in 2014-15. Our commitments include taking the needs of the Armed Forces into account when setting new policies and involving the Armed Forces community in health initiatives.

### As a service provider

#### We will improve the way we give information

**Accessible information:** we have designed easy read guidance for Sevenoaks Switch and Save which allows residents to compare energy tariffs. We have also worked with a local charity to make consultations on the Community Plan accessible to people with learning disabilities.

#### We will identify and deal with physical barriers to our services

**Licensing:** Four Hackney carriage vehicles are wheelchair accessible. 11 Private hire vehicles are wheelchair accessible.

**Housing:** we are continuing to investigate provision of a supported housing scheme for people with learning disabilities. During 2014-15 we have continued to work with partners to identify scheme types to meet client needs and satisfy funding requirements. We have also completed the second-stage of a housing needs study for people with learning disabilities in Sevenoaks District. This will continue in 2015-16.

## Agenda Item 8

**Access information:** a Leisure and Recreation Strategy will be developed in 2015-16 and will address accessibility. We have started to develop a tourism micro-site which will provide accessibility information online for visitors to the area. This will be completed in 2015-16.

**Safeguarding:** the Council has a Safeguarding Policy that is available to all on the website. There is a council safeguarding group which meets on a quarterly basis. Training for staff has been completed this year and will continue every two years. The Safeguarding Policy and training has also been issued to all our contractors and is a vital part of funding and grant bids.

### We will find ways to adapt our services and direct people more easily between services within resource limitations

**Outreach surgeries:** we have provided outreach surgeries to help older people to switch and save money, using the Council's energy switching service, and to provide housing advice and help identify any health and welfare issues.

### Other actions we will take as a service provider

**Housing for young people:** we have identified a potential new-build opportunity to provide accommodation for young people in Swanley, though these are initial investigations only. This is ongoing.

**Housing for older people:** we are working with housing associations to provide new housing facilities for older people, with one recently completed and two more planned. This will provide modern accommodation for older people and aid independent living. We have developed a series of housing advice leaflets for older people in a wide-range of typical life and living situations.

**Housing allocations:** we have continued to monitor the number of applicants on the register and the number of those housed by client group. Following changes to the Sevenoaks District Housing Register Policy in 2013 the proportion of applicants with a stated mobility need increased from 2.5% to 13.8%. 19.5% of those housed in the following year had a stated mobility need. The proportion of residents from a Black and Minority Ethnic Background reduced from 6.3% to 3.75%, following the changes to the Register. 2.75% of those housed in the following year were from a Black and Minority Ethnic Background.

**Licensing:** we have continued to provide training, covering all of the licensing objectives under the Gambling Act (2005) to Members of the Licensing Committee, including training covering children and vulnerable adults.

**Local plan:** this is being developed over a timetable running up to Winter 2017. The Allocations and Development Management Plan was adopted in February 2015. A Strategic Housing Market Assessment for the District has been commissioned and will assess the need for older people, households with disabilities, family housing, self-builds, private rented and affordable housing.

**Welfare reform:** we continue to monitor the impact of the changes on our customers. A full review of the Council Tax Support Scheme will be carried out in 2015-16.

### As an employer

#### We will establish the extent and nature of any issues about equal pay

**Gender pay gap:** we have completed a gender pay gap analysis for 2014/15. The Council has a near equal split of male and female employees (53% / 47%). The data shows that the pay gap is 2.1%. The national average pay gap is currently 9.8%.

64% of the Council's full time employees are male. The full-time pay gap is 1.8%, with the salary paid to females being slightly higher than that paid to males.

## Agenda Item 8

87% of the Council's part time employees are female. The part-time pay gap is 1.9%, with the full time equivalent salary paid to males being slightly higher than that paid to females.

### Other actions we will take as an employer

No actions were identified for 2014-15.

This page is intentionally left blank



**Legal & Democratic Advisory Committee Work Plan 2015/16**

<b>2 July 2015</b>	<b>8 October 2015</b>	<b>26 January 2016</b>	<b>14 April 2016</b>
KCC Boundary Review	Budget: Service Overviews and Service Change Impact Assessments (SCIAS)		

This page is intentionally left blank